

PLA-401 v3

Powerline Ethernet Adapter

User's Guide



Firmware Version 3.3.4
Edition 1, 3/2009

www.zyxel.com

ZyXEL

About This User's Guide

Intended Audience

This manual is intended for people who want to configure the PLA-401 v3 using the PLA-4xx Series Configuration Utility version 3.3.4. You should have your basic Internet access or home network already set up.

Related Documentation

- Quick Start Guide

The Quick Start Guide is designed to help you get up and running right away. It contains information on making your hardware connections.

- Supporting Disc

Refer to the included CD for support documents.

- ZyXEL Web Site

Please refer to www.zyxel.com for additional support documentation and product certifications.

User Guide Feedback

Help us help you. Send all User Guide-related comments, questions or suggestions for improvement to the following address, or use e-mail instead. Thank you!

The Technical Writing Team,
ZyXEL Communications Corp.,
6 Innovation Road II,
Science-Based Industrial Park,
Hsinchu, 300, Taiwan.

E-mail: techwriters@zyxel.com.tw

Customer Support

In the event of problems that cannot be solved by using this manual, you should contact your vendor. If you cannot contact your vendor, then contact a ZyXEL office for the region in which you bought the device. See http://www.zyxel.com/web/contact_us.php for contact information. Please have the following information ready when you contact an office.

- Product model and serial number.
- Warranty Information.
- Date that you received your device.

Brief description of the problem and the steps you took to solve it.

Document Conventions

Warnings and Notes

These are how warnings and notes are shown in this User's Guide.

Warnings tell you about things that could harm you or your device.








Note: Notes tell you other important information (for example, other things you may need to configure or helpful tips) or recommendations.

Syntax Conventions

- The PLA-401 v3 may be referred to as the "PLA-401 v3", the "ZyXEL device", the "device" or the "powerline adapter" in this User's Guide.
- The PLA-4xx Series Configuration Utility version 3.3.4(AG) may be referred to as the "configuration utility" or the "utility" in this User's Guide.
- Product labels, screen names, field labels and field choices are all in **bold** font.
- A key stroke is denoted by square brackets and uppercase text, for example, [ENTER] means the "enter" or "return" key on your keyboard.
- "Enter" means for you to type one or more characters and then press the [ENTER] key. "Select" or "choose" means for you to use one of the predefined choices.
- A right angle bracket (>) within a screen name denotes a mouse click. For example, **Maintenance > Log > Log Setting** means you first click **Maintenance** in the navigation panel, then the **Log** sub menu and finally the **Log Setting** tab to get to that screen.
- Units of measurement may denote the "metric" value or the "scientific" value. For example, "k" for kilo may denote "1000" or "1024", "M" for mega may denote "1000000" or "1048576" and so on.
- "e.g.," is a shorthand for "for instance", and "i.e.," means "that is" or "in other words".

Icons Used in Figures

Figures in this User's Guide may use the following generic icons. The PLA-401 v3 icons used may not be an exact representation of your device.

PLA-401 v3 	Computer 	Internet 
Modem / Router 	Printer 	Notebook 
TV 		

Safety Warnings

- Do NOT use this product near water, for example, in a wet basement or near a swimming pool.
- Do NOT expose your device to dampness, dust or corrosive liquids.
- Do NOT store things on the device.
- Do NOT install, use, or service this device during a thunderstorm. There is a remote risk of electric shock from lightning.
- Connect ONLY suitable accessories to the device.
- Do NOT open the device or unit. Opening or removing covers can expose you to dangerous high voltage points or other risks. ONLY qualified service personnel should service or disassemble this device. Please contact your vendor for further information. Make sure to connect the cables to the correct ports.
- Place connecting cables carefully so that no one will step on them or stumble over them.
- Always disconnect all cables from this device before servicing or disassembling.
- Use ONLY an appropriate power adapter or cord for your device.
- Connect the power adapter or cord to the right supply voltage (for example, 110V AC in North America or 230V AC in Europe).
- Do NOT allow anything to rest on the power adapter or cord and do NOT place the product where anyone can walk on the power adapter or cord.
- Do NOT use the device if the power adapter or cord is damaged as it might cause electrocution.
- If the power adapter or cord is damaged, remove it from the power outlet.
- Do NOT attempt to repair the power adapter or cord. Contact your local vendor to order a new one.
- Do not use the device outside, and make sure all the connections are indoors. There is a remote risk of electric shock from lightning.
- Do NOT obstruct the device ventilation slots, as insufficient airflow may harm your device.
- If you wall mount your device, make sure that no electrical lines, gas or water pipes will be damaged.
- This power unit is intended to be correctly orientated in a vertical or floor mount position.

Your product is marked with this symbol, which is known as the WEEE mark. WEEE stands for Waste Electronics and Electrical Equipment. It means that used electrical and electronic products should not be mixed with general waste. Used electrical and electronic equipment should be treated separately.



Table of Contents

About This User's Guide	3
Document Conventions.....	5
Safety Warnings.....	7
Table of Contents.....	9
Part I: Introduction.....	13
Chapter 1	
Introducing the PLA-401 v3	15
1.1 Overview	15
1.2 Expand Your Network with the PLA-401 v3	15
1.3 Ways to Manage the PLA-401 v3	16
1.4 Security	16
1.4.1 Passwords	17
1.4.2 Setting Up Security	17
1.5 Multiple Networks	18
1.6 PLA Compatibility	18
.....	20
Chapter 2	
Installing the Utility.....	21
2.1 Overview of the Installation Process	21
2.2 Installing the Utility	21
2.3 Low Power Mode	24
Part II: Managing the PLA-401 v3	25
Chapter 3	
Firmware Tool.....	27
3.1 Overview	27
3.2 Firmware Upgrade Tool	27
Chapter 4	
The ENCRYPT Button.....	29

4.1 ENCRYPT Button Overview	29
4.2 Set Up a HomePlug AV Network with ENCRYPT	29
4.3 Setting Up Multiple Networks	31
4.4 ENCRYPT Button Behavior	34
Chapter 5	
The Configuration Utility	35
5.1 Overview	35
5.1.1 Powerline Network Security	35
5.1.2 Device Access Key (DAK)	36
5.2 Starting the Configuration Utility	36
5.3 Configuration Screen	37
5.4 Firmware Screen	38
5.5 Network Info Screen	40
5.6 Advanced Screen	41
5.7 About Screen	44
Chapter 6	
The OS X Configuration Utility	47
6.1 Overview	47
6.1.1 System Requirements	47
6.1.2 Start the Configuration Utility	48
6.1.3 Add a Device	48
6.1.4 Change Network Name	48
6.1.5 Change Nickname	49
6.1.6 QoS Settings	49
6.1.7 Set HomePlug Light Color	51
6.1.8 Link Information	52
6.1.9 Download Firmware	54
6.2 Firmware Detection Tool	54
6.3 Firmware Upgrade Tool	56
6.3.1 Notes on Upgrading Firmware	56
6.3.2 Procedure to Upgrade Firmware	56
Chapter 7	
Powerline Network Setup Tutorial	61
7.0.1 Overview	61
7.0.2 Important Terms	62
7.0.3 Accessing Your Powerline Adapter	62
7.0.4 Adding a Powerline Adapter	63
7.0.5 Setting Up a New Network with a New Adapter	65
7.0.6 Splitting a Network into Two Networks	67
7.1 Troubleshooting	70

Chapter 8
LEDs and Troubleshooting 71

- 8.1 LEDs 71
- 8.2 Power and Light Problems 73
- 8.3 Configuration Utility Problems 74
- 8.4 Powerline Problems 75
- 8.5 ENCRYPT Button Problems 76

Part III: Appendices and Index..... 79

- Appendix A Product Specifications..... 81
- Appendix B Legal Information 85
- Index..... 89**

PART I

Introduction

Introducing the PLA-401 v3 (15)

Installing the Utility (21)

Introducing the PLA-401 v3

1.1 Overview

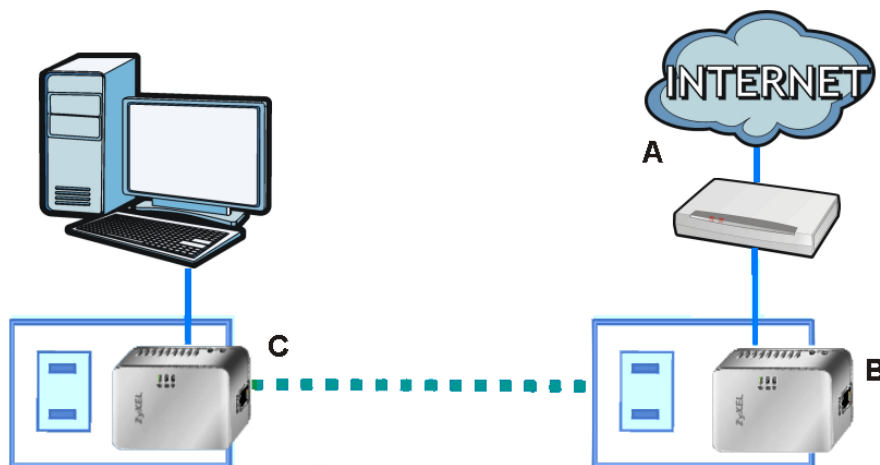
This chapter introduces the main applications and features of the PLA-401 v3 HomePlug AV compliant powerline adapter. See [Appendix A on page 81](#) for detailed product specifications.

In this User's Guide the electrical wiring network is referred to as the "powerline network". The HomePlug AV standard specifies how network devices communicate using standard electrical wiring.

1.2 Expand Your Network with the PLA-401 v3

The PLA-401 v3 plugs into an ordinary power outlet to easily extend a cable or DSL broadband connection or existing Ethernet (LAN) network to any other electrical outlet in any room of a house, all without the need for any new cabling. Devices can securely communicate with each other at high data transfer rates. (See [Appendix A on page 81](#) for speeds currently supported by the PLA-401 v3.) The PLA-401 v3 uses 128-bit Advanced Encryption Standard (AES) to ensure safe transfer of information.

Figure 1 Expand Your Network with the PLA-401 v3



Connect your PLA-401 v3 to an Internet gateway such as a modem and plug it into an ordinary power outlet in your home. Plug a second PLA-401 v3 into another power outlet and connect a computer to the PLA-401 v3 for Internet access. Your network can be further expanded by plugging additional PLA-401 v3s into other outlets in your home and connecting other computers or network devices (for example, a printer) to them.

Refer to your Quick Start Guide for hardware connection information. Refer to [Appendix A on page 81](#) for wall mounting instructions.

1.3 Ways to Manage the PLA-401 v3

Use the **ENCRYPT** button to add powerline devices to your powerline network if they have this button. See [Chapter 4 on page 29](#) for instructions on using the **ENCRYPT** feature.

Use the **PLA-4xx Series Configuration Utility** (or utility, for short) to manage the PLA-401 v3. See [Section 2.2 on page 21](#) for instructions on installing the utility.

Use the firmware upgrade tool to upgrade to the latest firmware. Because the latest PLA-401 v3s are only compatible with other powerline devices with the latest HomePlug AV firmware, as well as the latest version Utility, these tools are available to help you upgrade. You can download this tool from the ZyXEL website (www.zyxel.com.tw). See [Chapter 3 on page 27](#) for information in using these tools.

Note: This User's Guide describes the latest version utility. This utility is only compatible with a PLA-401 v3 which has the latest firmware installed. If you don't already have them, download the latest firmware and utility from the ZyXEL website.

1.4 Security

Since your powerline network may extend outside your premises, it is important to set up security on your PLA-401 v3.

1.4.1 Passwords

You use two types of passwords in the HomePlug AV powerline network. The following table describes the differences between the passwords.

Table 1 Password Summary

PASSWORD	DESCRIPTION
Network Name	All powerline adapters that follow the HomePlug AV standard are shipped with the same powerline network name "HomePlugAV". Change the network name via the PLA-4xx Series Configuration Utility to create a private network. See Section 5.3 on page 37 .
DAK (Data Access Key) Password	In order to manage the powerline adapters on your powerline network you must enter the adapters' DAK password in the PLA-4xx Series Configuration Utility . This password is printed on the powerline adapter itself. You don't need to add the password for the powerline adapter directly connected to the computer running the configuration utility (local powerline adapter), you only have to add the remote powerline adapters' passwords (those on your circuit, but not directly connected to your computer).

1.4.2 Setting Up Security

The ENCRYPT feature automatically sets up security on your powerline network. Use this feature if your powerline devices have the **ENCRYPT** button.

If your devices do not have the **ENCRYPT** button, use the **PLA-4xx Series Configuration Utility** to set up security on the PLA-401 v3. Although the PLA-401 v3 is a "plug-and-play" network expanding solution there are several reasons for enabling security on the powerline network in your home.

- 1 It's easy and only requires you to change a network name.
- 2 It's a good idea to ensure privacy of your communication. When you use the PLA-401 v3 and other powerline adapters, the electrical wiring in your home becomes an extension of your Ethernet network. Your network traffic flows freely within the electrical circuit of your home and is bounded in most cases by a power meter.

Without security (encryption) your information is accessible to anyone using a powerline adapter on the same electrical circuit. In some cases, a circuit can be shared by more than one household.

To prevent compromising your network security, you can create a private network. A private network uses a secret password (**Network Name**) to make sure that only permitted powerline adapters can communicate in your network. See [Section 5.3 on page 37](#) for information on setting up a private network.

- 3 You may need to change the **Network Name** to create multiple powerline networks. See the next section for more information on how to set up a multiple network.

1.5 Multiple Networks

Multiple powerline networks can coexist on a single powerline circuit. You might want to implement multiple powerline networks in a small office environment where you have two separate Ethernet networks.

- 1 Connect one powerline adapter to a router or switch on the first Ethernet network and assign a **Network Name** (for example "Password1") to this powerline adapter. Add additional powerline adapters to your network by plugging them into your powerline outlets and assigning them "Password1". This completes the configuration of your first powerline network.
- 2 Connect another powerline adapter to a router or switch on the second Ethernet network and assign a different **Network Name** (for example "Password2") to this powerline adapter. Again, add additional powerline adapters and assign them "Password2".

You now have two private networks on your powerline circuit. Information is not shared between the two networks as only powerline adapters with the same **Network Name** can communicate with each other.

1.6 PLA Compatibility

Your PLA-401 v3 can work with different PLA models that have a firmware version of at least **3.0.5** in the same powerline network.

The following table shows a quick summary of firmware and utility versions compatible with the different powerline models.

Table 2 Firmware and Utility Compatibility

PLA MODEL	FIRMWARE V 3.0.5	UTILITY V 3.0.5	FIRMWARE V 3.3.4	UTILITY V 3.3.4
PLA v1 models	Compatible	Compatible	Incompatible	Compatible
PLA v2 models	Compatible	Compatible	Compatible	Compatible
PLA v3 models	Incompatible	Incompatible	Compatible	Compatible

For PLA v1 models (for example, PLA-400, PLA-401, PLA-470, PLA-491 and so on) upgrade the firmware version from **1.4.5** to **3.0.5**. Refer to the PLA-4XX series User's Guide for instructions on how to do this.

For PLA v2 models (for example, PLA400 v2, PLA402 v2, PLA401 v2, PLA470 v2 and so on) make sure the firmware version is **3.0.5**.

Note: The PLA v2 models can be upgraded to firmware version 3.3.4. The firmware will be available for download in ZyXEL's website (www.zyxel.com).

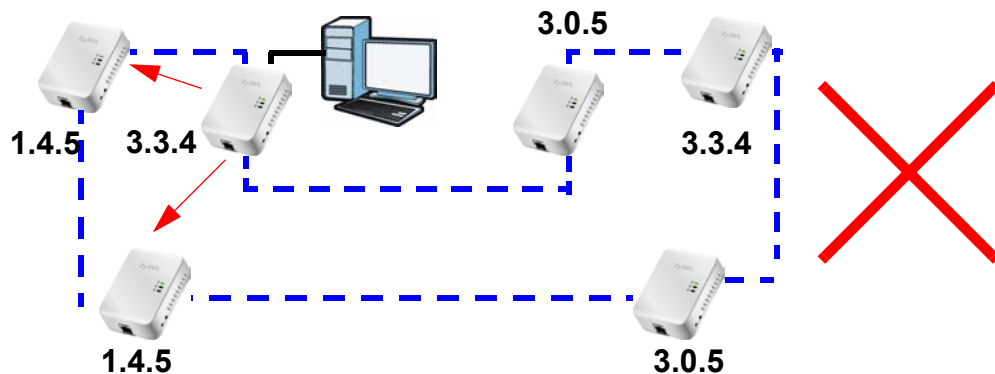
At the time of writing, PLA-401 v3 can only work with firmware version **3.3.4**.

Use Configuration Utility version **3.3.4** to manage PLA v2 and PLA v1 models with firmware versions **3.0.5**.

Note: You cannot downgrade the PLA-401 v3's firmware to a version earlier than 3.3.4.

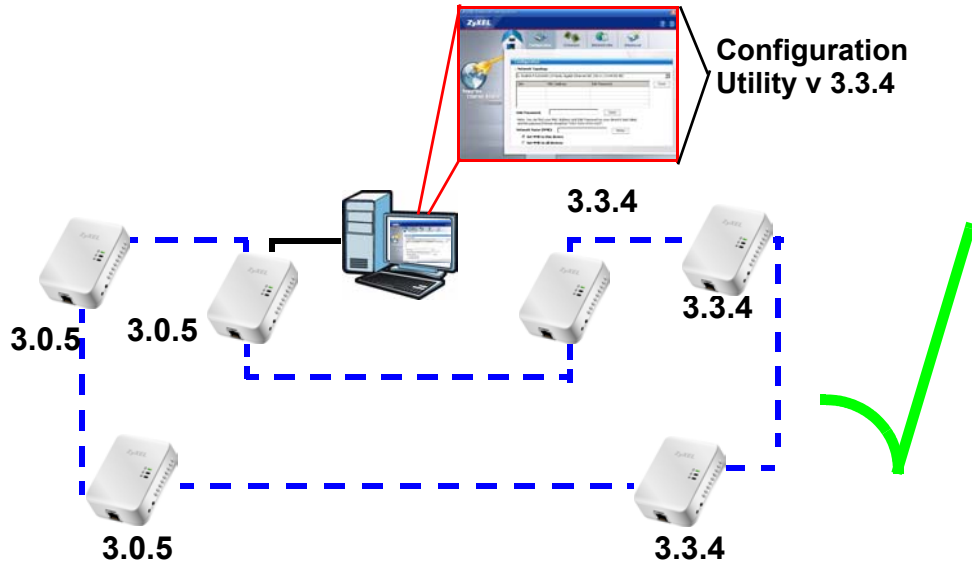
This diagram below shows a Powerline network where two PLAs have an earlier firmware that cannot be managed by the 3.3.4 Configuration Utility. You should upgrade the firmware of these PLAs.

Figure 2 Wrong Firmware in a Powerline Network



The diagram below shows a Powerline network where each PLA has the correct firmware. Use Configuration Utility v 3.3.4 to manage the PLAs in this Powerline network.

Figure 3 Correct Powerline Network



Installing the Utility

This chapter guides you through the installation of the configuration utility for your PLA-401 v3.

2.1 Overview of the Installation Process

The installation of the configuration utility does the following:

- 1 Checks for and installs Microsoft's .NET Framework version 2.0 software on your computer. This software is necessary for the installation of the **PLA-4xx Series Configuration Utility**. If you already have .NET Framework version 2.0 installed on your computer this step will be skipped.

Note: At the time of writing the **utility** is only compatible with Microsoft Windows XP and Microsoft Windows Vista (32-bit version) operating systems. Users with Windows XP (64-Bit version) operating systems can go to Microsoft's website to upgrade their systems to .NET Framework version 2.0 so it can work with the **utility**. To check for your Windows operating system version, right-click on **My Computer > Properties**. You should see this information in the **General** tab.

- 2 Installs ZyXEL's **PLA-4xx Series Configuration Utility**. This utility allows you to manage the network name (See [Section 5.3 on page 37](#) for more information) or view the devices recognized on your powerline network.

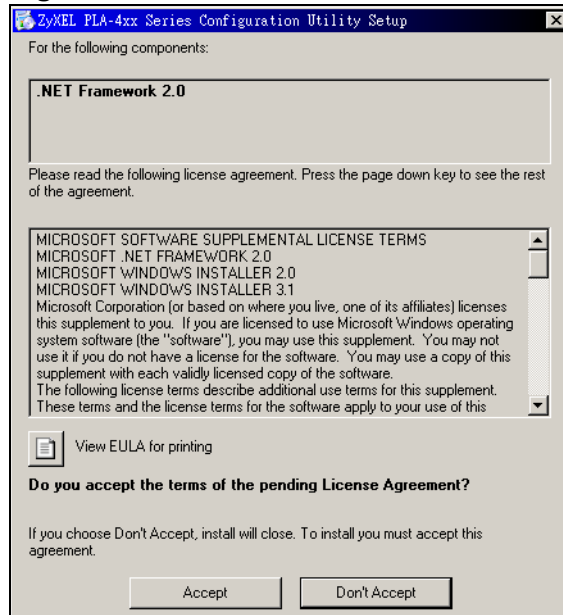
Note: This User's Guide describes the latest version utility. This utility is only compatible with a PLA-401 v3 which has the latest firmware installed. If you don't already have them, download the latest firmware and utility from the ZyXEL website.

2.2 Installing the Utility

Follow the steps below to install .NET Framework version 2.0 and the **PLA-4xx Series Configuration Utility** on your computer.

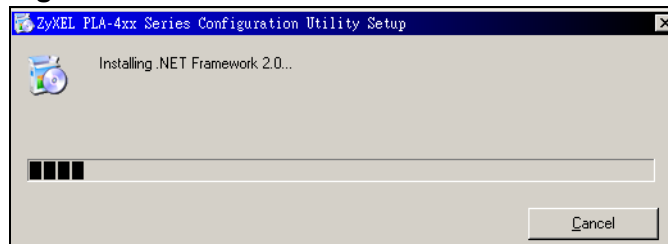
- 1 Insert the included CD-ROM into your computer's CD-ROM drive. The Setup utility runs automatically. Alternatively this can also be done manually by double clicking the **setup.exe** file on the CD. A prompt appears asking you to install the .NET Framework version 2.0. Review Microsoft's **License Agreement**, select **Accept** to proceed.

Figure 4 .NET Framework Installation Prompt



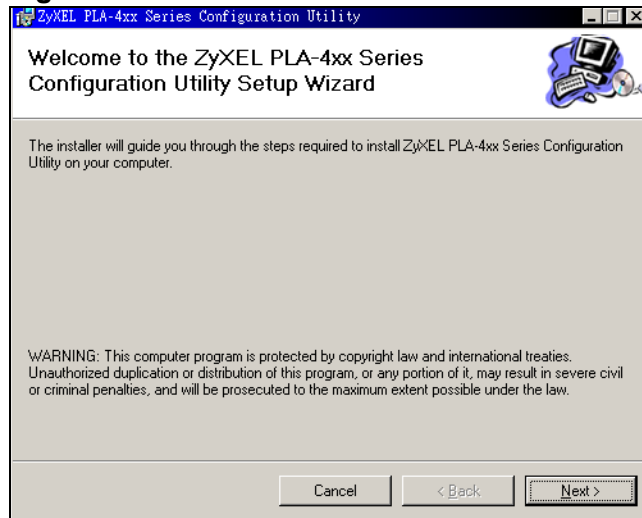
- 2 The next screen allows you to see the progress of the installation.

Figure 5 .NET Framework Installation Process



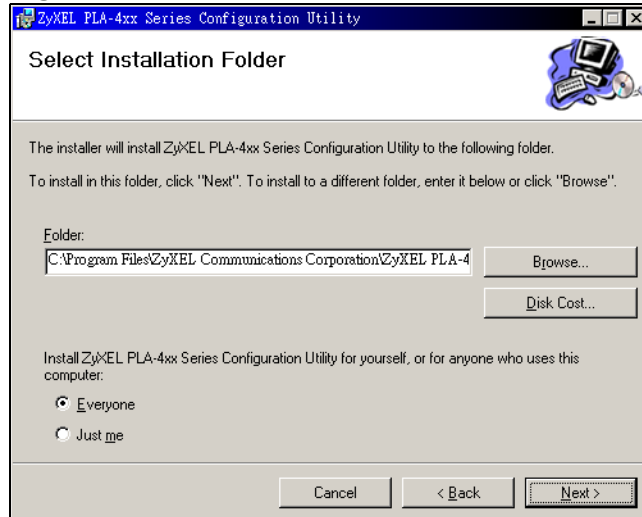
- 3 The Setup utility runs automatically. Click **Yes** or **Next** to continue through the initial screen. Click **Cancel** only if you want to abort the installation.

Figure 6 InstallShield Wizard Start Screen



- 4 If you want the utility to be only available to the currently logged in user, select **Only for me(...)**. Otherwise, click **Everyone** to allow all users to use the configuration utility. Click **Next** to install the utility to the default folder, or click **Browse** to specify a different location on your computer.

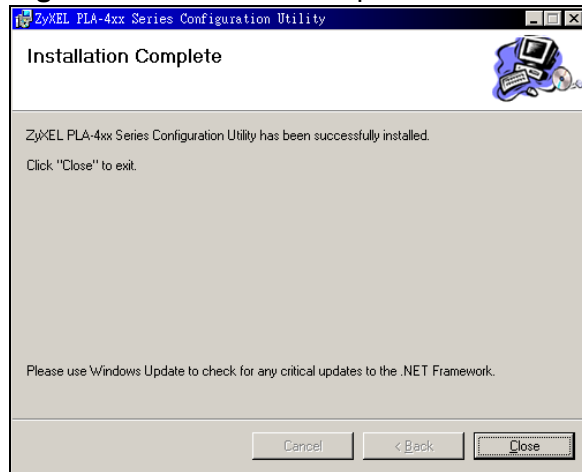
Figure 7 Install Destination Folder



Note: You can also click **Disk Cost** to know how much available disk space you have in the hard drives found in your computer.

- 5 When the installation is finished, a screen appears to confirm the **InstallShield Wizard** has successfully installed the **PLA-4xx Series Configuration Utility** to your computer. Click **Close** to exit the wizard.

Figure 8 Installation Complete



Note: You may be asked to restart your computer when the installation is complete. Click "Yes" to restart your computer. If you select "No, I will restart my computer later", you will not be able to launch the utility until after a restart of your computer.

2.3 Low Power Mode

Your PLA-401 v3 is a certified green product. It goes into Low Power mode when there is no Ethernet connection.

When you plug the PLA-401 v3 into an electric socket, it waits for an Ethernet connection. When no connection is detected after sixty (60) seconds, the **Power** LED blinks indicating that it is going into Low Power mode.

The same process occurs when you disconnect the PLA-401 v3 from a previously working Ethernet connection. Sixty (60) seconds after disconnecting the Ethernet cable, the PLA-401 v3's **Power** LED blinks signalling that it is going into Low Power mode.

The **Ethernet** and **HomePlug** LEDs are turned off in Low Power mode.

While in Low Power mode, you cannot use the **ENCRYPT** button. To enable the **ENCRYPT** button again, you have to connect the PLA-401 v3's Ethernet cable to a computer/notebook or modem/router first. The PLA-401 v3 wakes up from Low Power mode and you can start using the **ENCRYPT** button.

Low Power mode is enabled by default.

PART II

Managing the PLA-401 v3

Firmware Tool (27)

The ENCRYPT Button (29)

The Configuration Utility (35)

Powerline Network Setup Tutorial (61)

LEDs and Troubleshooting (71)

Firmware Tool

3.1 Overview

Use the **Firmware Upgrade Tool** to ensure you have the latest firmware (version 3.3.4 or later) on your PLA-401 v3(s).

You need to upgrade all your PLA-401 v3s to the latest firmware to ensure they can connect with each other and they are compatible with the latest version Utility.

If your firmware is an early version (earlier than 3.3.4), then upgrade your firmware using the **Firmware Upgrade Tool**.

3.2 Firmware Upgrade Tool

Use the firmware upgrade tool to upgrade your PLA-401 v3's firmware to the latest version.

You can use this tool to upgrade the firmware on the powerline device directly connected to your computer. This is necessary as devices with ZyXEL's early version firmware are not compatible with the latest Utility or with devices running ZyXEL's latest version firmware.

At the time of writing, firmware version 3.3.4 is only available to PLA-401 v3.

Note: The firmware is included in the Tool. You do not need to download the firmware separately.

The ENCRYPT Button

Use the **ENCRYPT** button to automatically set up a secure powerline connection between your powerline devices.

4.1 ENCRYPT Button Overview

The **ENCRYPT** button allows you to set up a secure powerline connection with other HomePlug AV compliant powerline devices which also support the **ENCRYPT** feature. No other powerline setting changes are required to connect.

You can use the **ENCRYPT** button to:

- set up a new powerline network
- separate an existing powerline network into multiple networks

4.2 Set Up a HomePlug AV Network with ENCRYPT

You can connect a number of devices on a powerline network, but you can use the **ENCRYPT** button on only two devices at a time.

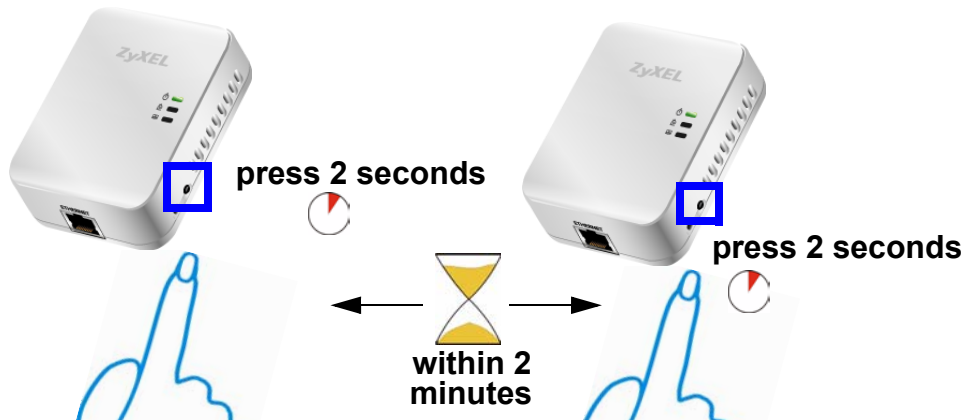
- 1 Place a powerline device close to another powerline device so you have time to set up each one. After you set up the first powerline device, you have 120 seconds to set up the second powerline device.
- 2 You can disconnect them from your computer or modem (or other networking equipment) if you need to move them close to each other, but the powerline devices need to be plugged into power outlets.

Note: Because your PLA-401 v3 goes into Low Power mode, it must be connected to a networking equipment for the **ENCRYPT** button to work. Refer to [Section 2.3 on page 24](#) for more details.

- 3 Press the **ENCRYPT** button at the rear of your powerline device for more than 10 seconds until the power (⏻) light flashes. This resets the network name to a random value and removes your device from any network it may belong to.

- 4 Press the **ENCRYPT** button at the side of your powerline device for 1~2 seconds. The power (🔌) light will blink as the powerline device tries to set up a connection.

Figure 9 ENCRYPT Connection Procedure



Note: The **ENCRYPT** button's location varies for each Powerline model.

- 5 Repeat step 4 in this section for the other powerline device you wish to connect. This must be done within 120 seconds of pressing the **ENCRYPT** button on the PLA-401 v3.
- 6 Check the lights on the two powerline devices. The power (🔌) and HomePlug (🏠) lights should be blinking while the devices are connecting. Several times all lights blink simultaneously and the HomePlug (🏠) light also shows red. Wait for about one minute while your powerline devices connect.

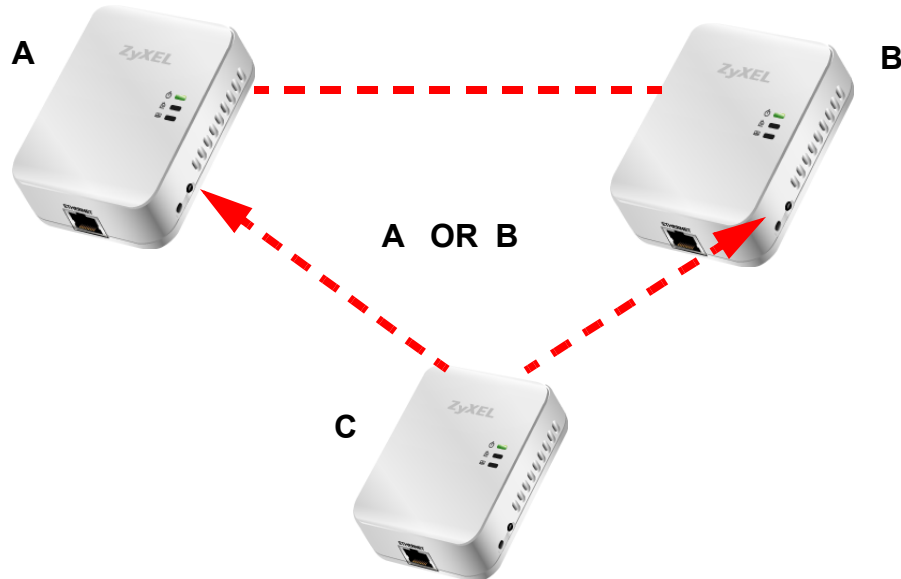
If the power (🔌) light does not blink when you press **ENCRYPT**, you have probably pressed the **ENCRYPT** button for too long. Try again, pressing the **ENCRYPT** button for 1~ 2 seconds.

If the HomePlug (🏠) lights on both powerline devices do not light up, the powerline devices are not connected. Repeat steps 4 and 5 in this section. If that doesn't work, see the Troubleshooting in Section 8.5 on page 76 for suggestions.

- 7 To add more powerline devices to your network, press the **ENCRYPT** button on device **C** (shown below) for more than 10 seconds until the power (🔌) light flashes.

- Then repeat steps 4 and 5 in this section using any powerline device (**A** or **B**) you have connected using **ENCRYPT** and the powerline device you want to connect (**C**). You must use the **ENCRYPT** button on both devices.

Figure 10 Adding More Powerline Adapters to Your Network



- If you disconnected your computer or modem (or any other networking product connected to your powerline device) in step 1 of this section, you can now reconnect them.

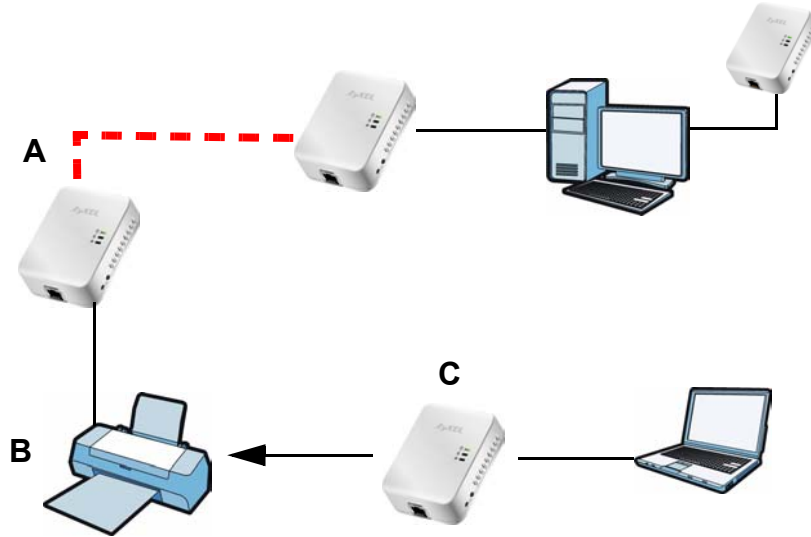
This sets up your powerline network between your powerline devices.

4.3 Setting Up Multiple Networks

You can use the **ENCRYPT** button to set up multiple powerline networks using your existing powerline network.

For example, you have already set up a powerline network in your home (**A**) which accesses a printer (**B**). Now you want a separate powerline network connection from your laptop to your printer (**C**).

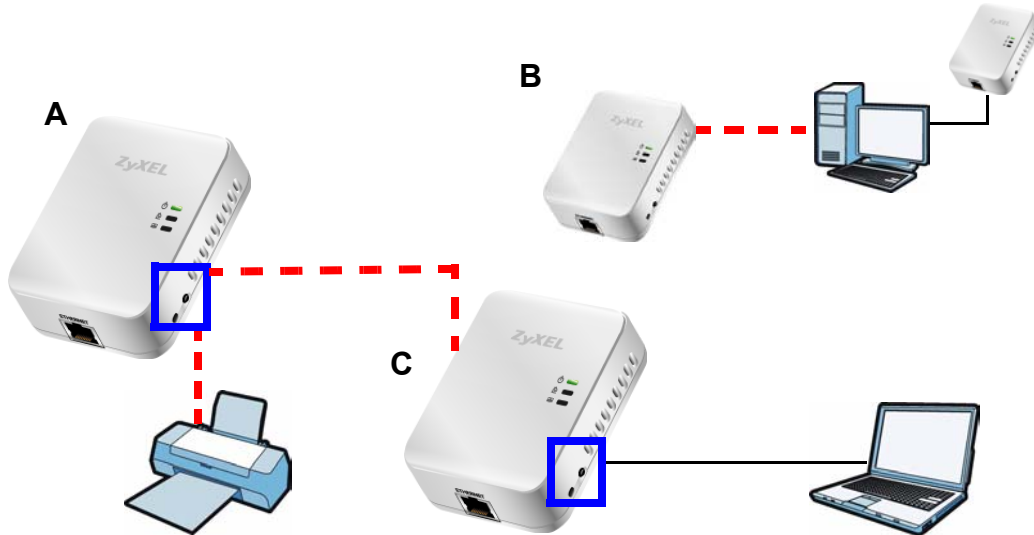
Figure 11 One Existing Powerline Network



- 1 Click the **ENCRYPT** button on (**A**) for more than 10 seconds until the power (⏻) light flashes. This disconnects (**A**) from (**B**).
- 2 Click the **ENCRYPT** button on (**A**) and (**C**) for 1~2 seconds and within two minutes of each other.
- 3 Wait for about one minute while (**A**) and (**C**) connect.

- 4 Check the LEDs on both (A) and (C). When the power (🔌) and HomePlug (🏠) lights stop blinking and the power (🔌) light shines steadily, the devices are connected.

Figure 12 Two Separate Powerline Networks



Congratulations. You now have two separate powerline networks as shown above.

If the HomePlug (🏠) lights on both powerline devices do not light up, the powerline devices are not connected. Repeat the connection process, making certain you press the **ENCRYPT** buttons for the correct time and within two minutes of each other. If that does not work see Section 8.5 on page 76 for suggestions.

4.4 ENCRYPT Button Behavior

The following table summarizes the actions that occur when the **ENCRYPT** button is pressed for specific lengths of time.

Table 3 Time **ENCRYPT** Button is Pressed and Action

TIME	ACTION	POWER LIGHT BEHAVIOR	HOMEPLUG LIGHT BEHAVIOR
less than 3 seconds	The device joins a network. It shares the same network name as other devices on the network.	The power (🔌) light blinks until the device is connected. This may take a minute.	The HomePlug (🏠) light turns on if your device is connected to another powerline device or a powerline network.
more than 10 seconds	The device leaves any network it is associated with and its network name assumes a random value.	The power (🔌) light blinks several times and then shines steadily.	The HomePlug (🏠) light blinks red one time and then turns off when it disconnects from the powerline network.

See Troubleshooting in [Chapter 8 on page 76](#) for suggestions on problems with the **ENCRYPT** button and the lights.

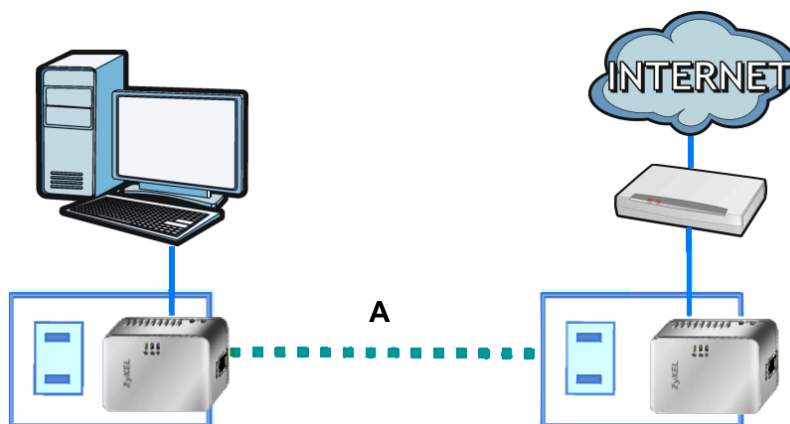
The Configuration Utility

5.1 Overview

This chapter shows you how to use the Configuration Utility (or Utility) to secure, manage and set up Quality of Service (QoS) on your powerline network.

The PLA-401 v3 is designed as a plug-and-play network expanding solution. This means that once you complete your hardware connections, the PLA-401 v3s in your network (without additional configuration) are able to communicate with each other by sending and receiving information over your home's electrical wiring (A).

Figure 13 Example Network Setup



All HomePlug AV compliant powerline adapters within range can join your network. The range varies depending on the quality of your home's wiring.

Note: See [Section 5.1.1 on page 35](#) for more information on enhancing your powerline network security.

5.1.1 Powerline Network Security

When the PLA-401 v3s communicate with each other, they use encryption to protect the information that is sent in the powerline network. Encryption is like a secret code. If you do not know the secret code, you cannot understand the

message. The HomePlug AV standard uses 128-bit AES (Advanced Encryption Standard) to safely transmit data between powerline adapters.

For the powerline adapters to communicate with each other they all need to use the same network name. This network name allows the powerline adapters to understand the encrypted information sent in the powerline network.

By default the PLA-401 v3s are all configured with the network name **HomePlugAV**, this allows you to simply plug the devices in and not worry about setting up security. If you want to enhance the security on your powerline network, you can change the network name on the powerline adapters you want to allow to communicate in your powerline network.

5.1.2 Device Access Key (DAK)

In order to manage the powerline adapters on your powerline network you must enter the adapters' password in the **PLA-4xx Series Configuration Utility**. This password is called the DAK (Device Access Key) password. This password is printed on the powerline adapter itself.

You don't need to enter the DAK password for the powerline adapter directly connected to the computer running the utility (local powerline adapter), you only have to add the remote powerline adapters' passwords (those in your powerline network, but not directly connected to your computer).

5.2 Starting the Configuration Utility

To launch the **PLA-4xx Series Configuration Utility** simply double click on the configuration icon on your desktop.

Figure 14 PLA-4xx Series Configuration Utility Icon



Alternatively, start the utility by browsing to it from the start menu. Click **Start > Programs > ZyXEL PLA-4xx Series Configuration > PLA-4xx Series Configuration Utility**.

Note: Close the **Firmware Upgrade Tool** and **Firmware Detection Tool** if either of them are open for the Utility to work properly.

5.3 Configuration Screen

Use the **Configuration** screen to see which devices are recognized by your powerline network, to configure your PLA-401 v3 and to set up a secure powerline network by changing the powerline network name. This screen opens up when you launch the utility.


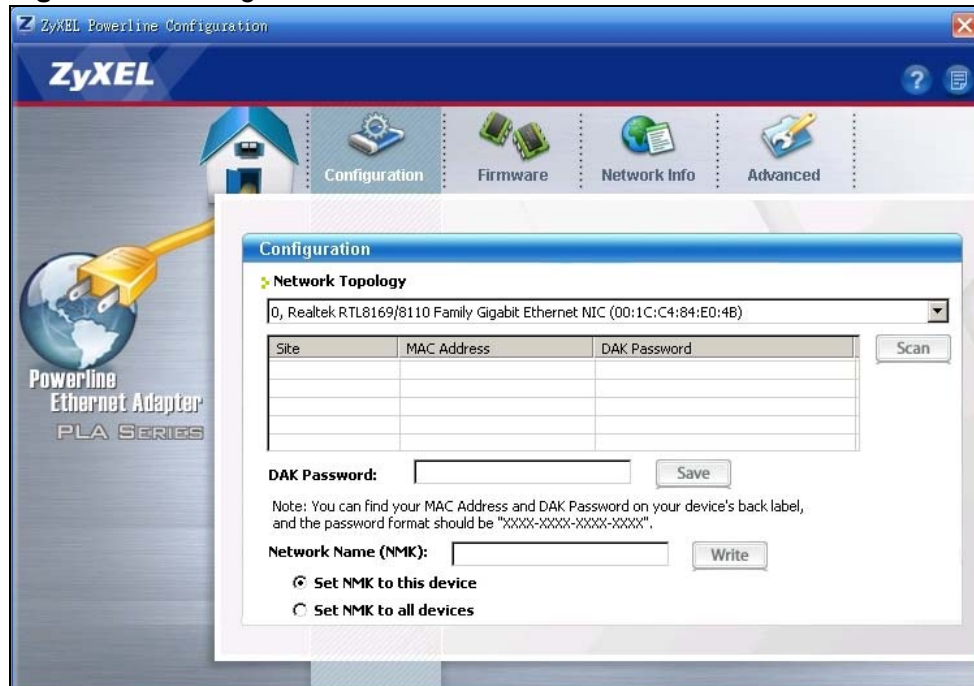
Note: Use the  icon to view online help information in each screen of the **utility**.

Figure 15 Configuration Screen



The following table describes the labels in this screen.

Table 4 Configuration Screen

LABEL	DESCRIPTION
Network Topology	Use this to select which powerline network information is displayed. Different powerline networks are identified by the Ethernet interface (network card) connected directly to the PLA-401 v3. Typically there is only one connection, however, if your computer has two network cards and both are connected to a powerline device then you have two powerline networks.
The fields described below are used to identify the powerline adapters recognized on the powerline network. The configuration utility automatically updates this information every 10 seconds. Click Scan to refresh the information in these fields (immediately).	
Note: Only devices which share the same network name are displayed in this table.	

Table 4 Configuration Screen (continued)

LABEL	DESCRIPTION
Site	<p>This field displays</p> <ul style="list-style-type: none"> • Local, if it is identifying the powerline adapter directly connected to the computer running the configuration utility. • Remote, if it is a powerline adapter in your powerline network but not directly connected to the computer running the configuration utility.
MAC Address	<p>This is a read-only field which shows the MAC address of the powerline adapter you are configuring. You can find the MAC address of your PLA-401 v3 displayed on a sticker on the bottom of your device.</p>
DAK Password	<p>DAK (Device Access Key) password is used to verify that you are authorized to perform changes on a remote device. You can find the DAK password printed on a sticker on the bottom of your PLA-401 v3.</p> <p>Select the remote powerline adapter you want to manage by clicking the MAC address which corresponds to it in the MAC Address column. Enter the DAK Password value and click Save.</p> <p>Note: You must enter the DAK Password value exactly as it is printed on the label (all caps and with dashes "-").</p>
Network Name	<p>The default network name (sometimes called a network password or network membership key (NMK)) of the PLA-401 v3 is "HomePlugAV". HomePlug compatible devices use the same network name to recognize and communicate with each other over the powerline network. If you change the network name of one device on the network, it will no longer be recognized as part of that network.</p> <p>If you change the network name, make sure you change the network name for all of the powerline adapters that you want to be part of your powerline network.</p> <p>The network name can be from 8 to 64 characters in length, using "A"~"Z", "a"~"z", "0"~"9"; spaces are not allowed.</p>
Set NMK to this device	<p>Select this to apply the NMK (entered in the field above) as the network name for the powerline adapter directly connected to the computer running the configuration utility.</p>
Set NMK to all devices	<p>Select this to apply the NMK (entered in the field above) as the network name for all powerline adapter detected by the utility.</p>
Save	<p>Click this to apply your changes. The new Network Name is applied to the selected powerline adapter.</p> <p>Note: You must enter the correct DAK password for the selected powerline adapter before you can make changes to it.</p>

5.4 Firmware Screen

Use the **Firmware** screen to update the firmware on the PLA-401 v3 directly connected to the computer running the configuration utility.

Firmware is the software which is embedded in the PLA-401 v3. This software contains processing instructions for how the PLA-401 v3 sends and receives information in a secure way.

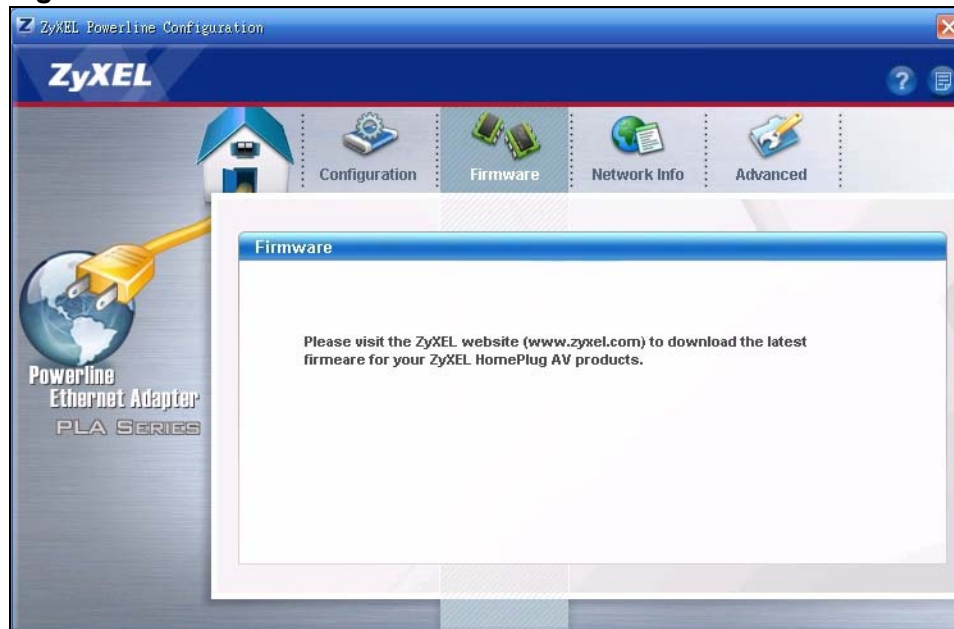
Parameter Information Block (PIB) is similar to firmware. It contains the most basic operating instructions for the PLA-401 v3 such as how to power up and how to load the firmware.

You can check the ZyXEL website for firmware upgrades for your PLA-401 v3.

Note: To upgrade to the latest firmware, use the firmware upgrade tool available from the ZyXEL website (www.zyxel.com), or from the CD included with your PLA-401 v3. Make sure you also upgrade the PLA-4xx Series Configuration Utility if you do so, as older version utilities are not compatible with PLA-401 v3s using the latest firmware.

Note: Be sure to upload the correct model firmware as uploading the wrong model firmware may damage your device.

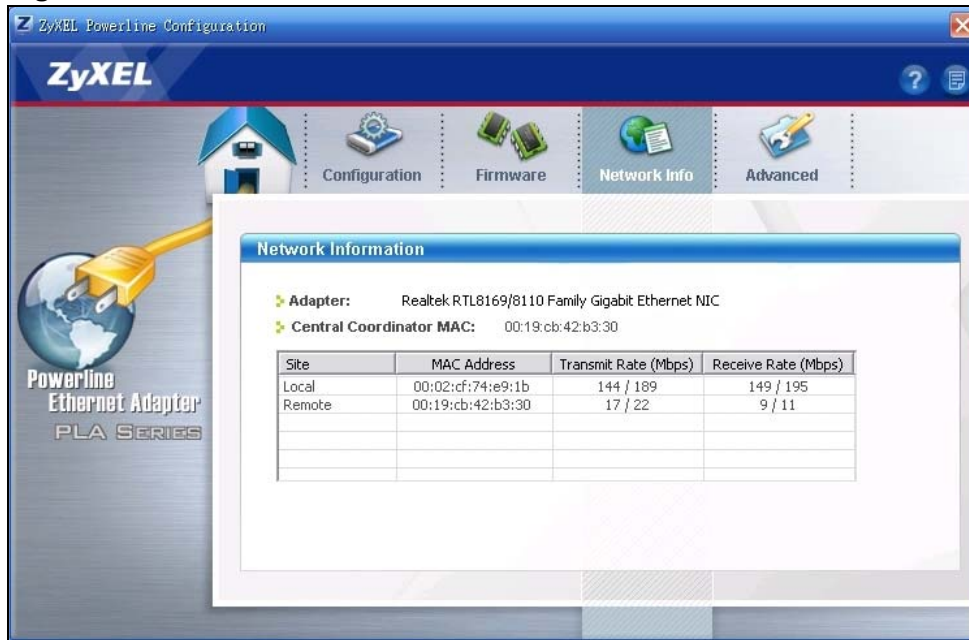
Figure 16 Firmware Screen



5.5 Network Info Screen

Use the **Network Info** screen to see the rates at which a specific PLA-401 v3 is communicating with other powerline adapters on your powerline network.

Figure 17 Network Info Screen



The following table describes the labels in this screen.

Table 5 Network Info Screen

LABEL	DESCRIPTION
Adapter	This field identifies which powerline network information is displayed. Different powerline networks are identified by the Ethernet interface (network card) connected directly to the PLA-401 v3. Typically there is only one connection, however, if your computer has two network cards and both are connected to a PLA-401 v3, then you have two powerline networks.
Central Coordinator MAC	The Central Coordinator of the powerline network is the powerline adapter which keeps track of which devices are part of the network as well as synchronizes communication within the powerline network. If the Central Coordinator is removed from the powerline network then another powerline adapter takes its place. This field displays the MAC address of the PLA-401 v3 which is the Central Coordinator of the powerline network. The powerline adapters in your powerline network automatically select the Central Coordinator.

Table 5 Network Info Screen (continued)

LABEL	DESCRIPTION
	<p>The information provided in the following table reflects transmission rate information about the powerline adapters which communicate in your powerline network.</p> <p>The powerline adapters listed in this table are all the powerline adapters in your powerline network except the powerline adapter selected in the Configuration page of the configuration utility. In other words, if the Local powerline adapter is selected in the Configuration screen, then this table will display the rates of transmission from the powerline adapter connected to the computer running the configuration utility to all the Remote powerline adapters.</p>
Site	<p>This field displays:</p> <ul style="list-style-type: none"> • Local, if it is the PLA-401 v3 directly connected to the computer running the configuration utility. • Remote, if it is a PLA-401 v3 in your powerline network but not directly connected to the computer running the configuration utility.
MAC Address	<p>This field displays the MAC address of your powerline adapter. The MAC address of your powerline adapter can be found by looking at the label on your device. It consists of six pairs of hexadecimal characters (hexadecimal characters are "0-9" and "a-f"). In the case of the PLA-401 v3, this label is on the bottom of the device.</p>
Transmit Rate (Mbps)	<p>This field displays how fast information is sent from the powerline adapter selected in the Configuration screen to this powerline adapter. The rate is given in the following format: "application data transmission rate / raw data transmission rate". Application data reflects more accurately how fast devices are transmitting application relevant traffic (for example Internet Protocol (IP) traffic). Raw data refers to the whole payload of the packets transmitted across the powerline network.</p>
Receive Rate (Mbps)	<p>This field displays how fast information is received from the powerline adapter selected in the Configuration screen to this powerline adapter. The rate is given in the following format: "application data transmission rate / raw data transmission rate". Application data reflects more accurately how fast devices are transmitting application relevant traffic (for example Internet Protocol (IP) traffic). Raw data refers to the whole payload of the packets transmitted across the powerline network.</p>

5.6 Advanced Screen

Note: This feature is only available with the latest version utility. Go to the ZyXEL website to download the latest utility and firmware for your ZyXEL HomePlug AV adapter.

You can configure the powerline adapters on your network to give priority to network traffic depending on its importance. When you set the priority of a powerline adapter, you set how quickly messages FROM your powerline adapter are sent in your powerline network. Transmissions TO your powerline adapter do not receive any priority.

For example, if you have a file server on your home network to deliver music and movie files to computers in your home, you should set the priority of the powerline adapter connected to this server to **Medium**. If video traffic is delivered too slowly, quality problems may occur.

On the other hand, a powerline adapter attached to a printer should have a low priority setting since the slow delivery of messages will not affect the print job.

Similarly, if you want to prioritize any downloads from the Internet, set the priority on the powerline adapter attached to your Internet gateway to **High**.

Allocate priority settings based on application type as follows.

Table 6 Priority Settings

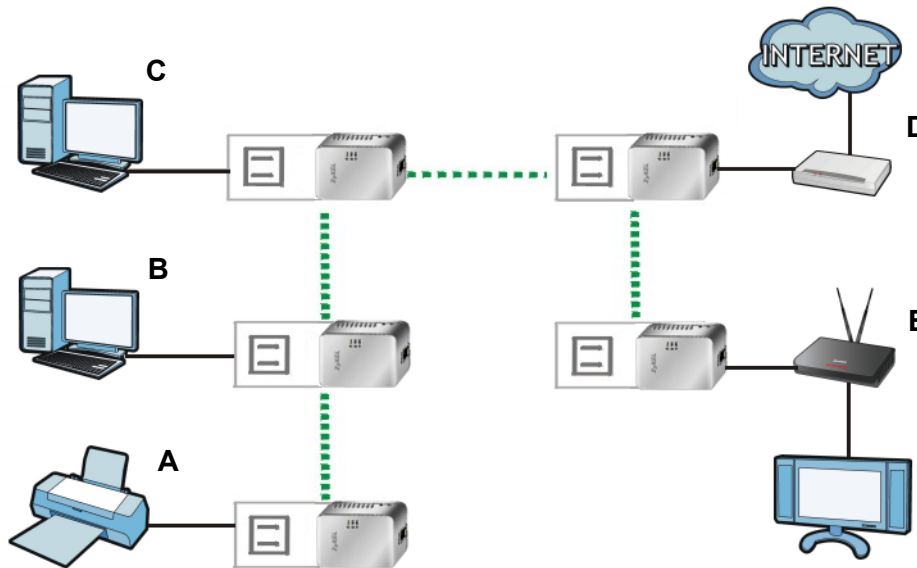
PRIORITY LEVEL	APPLICATION
High	Voice Application
Medium	Video and Audio Applications
Normal	Data Applications
Low	Data Applications

The figure below shows an example powerline home network connected to the Internet.

- Device A is a printer and does not handle traffic with high importance, so the powerline adapter connected to it can be set to low priority.
- Device B is a file server, delivering audio or movie files to other users on the network. The powerline adapter attached to it should have a medium setting.
- Device C, a home computer which connects to the Internet, can receive a normal priority setting as it usually sends simple requests for data. For example, when you surf the Internet, your computer sends requests to open web pages.
- Device D is a modem attached to the Internet. It should receive a high priority setting if you want faster downloading through your network.

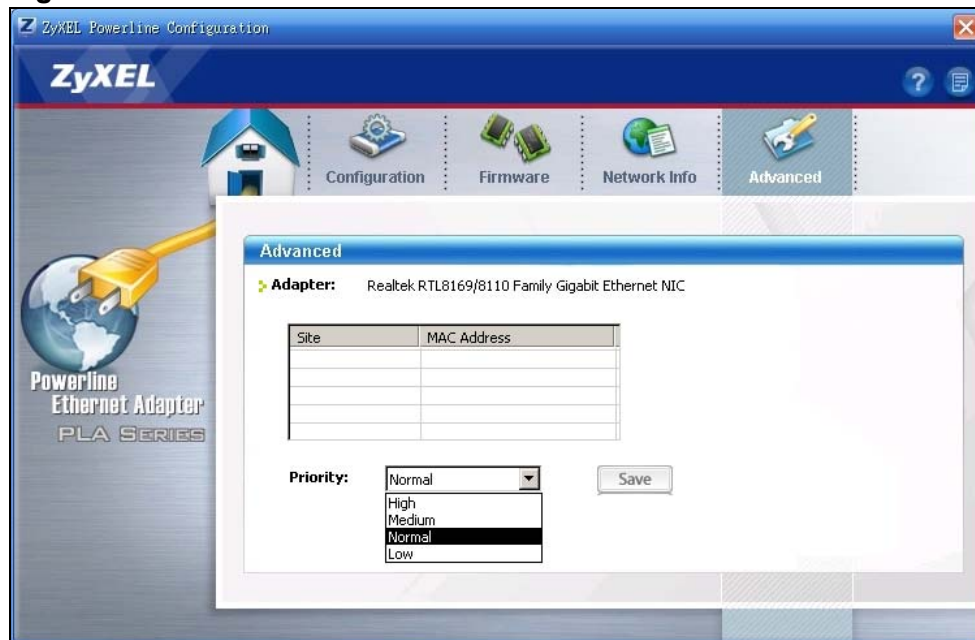
- Although device E receives audio or movie files, it does not send a lot of traffic, so the powerline adaptor attached to it can be set to a low priority.

Figure 18 Priority Settings



Use this screen to configure priority settings for traffic from the powerline adaptors on your network.

Figure 19 Advanced Screen



The following table describes the labels in this screen.

Table 7 Advanced Screen

LABEL	DESCRIPTION
Adapter	This field identifies which powerline network information is displayed. Different powerline networks are identified by the Ethernet interface (network card) on your computer which is connected directly to a powerline adapter. Typically there is only one connection. However, if your computer has two network cards and both are connected to a powerline adapter, then you have two powerline networks.
Site	This field displays: <ul style="list-style-type: none"> • Local, if it is the PLA-401 v3 directly connected to the computer running the configuration utility. • Remote, if it is a powerline adapter in your powerline network but not directly connected to the computer running the configuration utility.
MAC Address	This is a read-only field which shows the MAC address of the powerline adapter you are configuring. You can find the MAC address of your PLA-401 v3 displayed on a sticker on the bottom of your device.
Priority	Select a priority setting from the drop-down box for traffic FROM your selected device. The options, in order of importance, are High , Medium , Normal and Low .
Save	Click this to apply your changes. The new Priority setting is applied to the selected powerline adapter.

5.7 About Screen


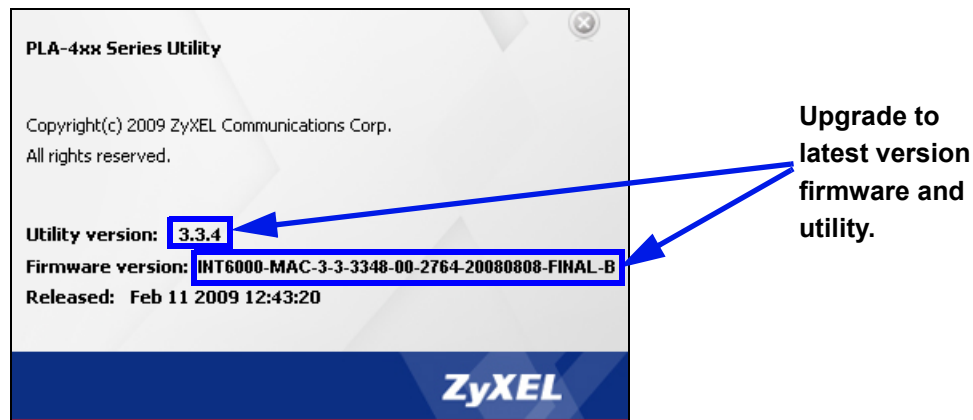

Use the **About** screen to view information regarding the configuration utility and firmware version of the PLA-401 v3 you are connected to. Click the  icon in the top right corner of the utility to view the **About** screen.

Figure 20 About Screen



The following table describes the labels in this screen.

Table 8 About Screen

LABEL	DESCRIPTION
Utility version:	This field displays the software version of the configuration utility.
Firmware version	This field displays the firmware version of the device you selected in the Device Selection field of the Configuration screen. In the example firmware version given in the screen, 3-3-3348 , the firmware version is shown by the numbers 334 , meaning this is firmware version 3.3.4. If your device's firmware is earlier than 3.3.4, please use the Firmware Upgrade Tool to upgrade your firmware.
Released	This field displays the date when the firmware was released.
Close	Click the  button in upper right corner to close the About window.

The OS X Configuration Utility

6.1 Overview

This chapter shows you how to use the configuration utility on a Mac computer with the Leopard operating system. See the User's Guide [Chapter 5 on page 35](#) for background information on some powerline features.

All HomePlug AV compliant powerline adapters within range can join your network. The range varies depending on the quality of your home's wiring. In the case of coaxial cable this can extend beyond the boundary of your home such as your neighbor's house or apartment for example .

Use the Mac utility to configure the following tasks:

- Change Network Name (NMK)
- Change Nickname
- QoS Settings
- Set HomePlug Light Color
- Link Information
- Download Firmware

6.1.1 System Requirements

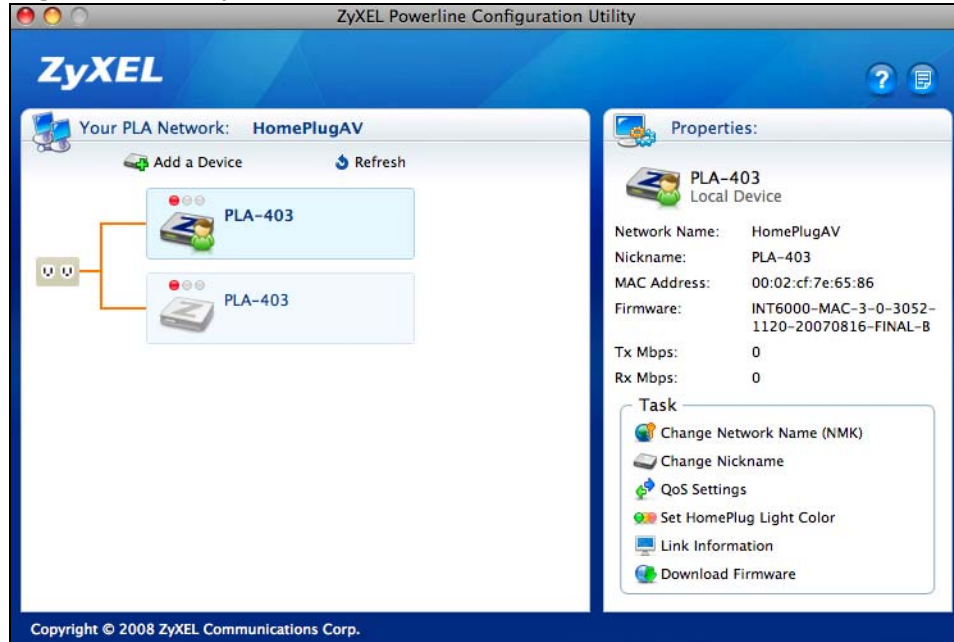
These are the OS X utility system requirements at the time of writing.

- Supported Models:
PLA-401 v3
- Supported Mac operating systems:
Mac OS X 10.3, Mac OS X 10.4, Mac OS X 10.5
- Supported Languages:
English, German, French, Spanish, Italian, Russian, Traditional Chinese, Dutch

6.1.2 Start the Configuration Utility

Drag the utility application from the CD (or download it from the ZyXEL download library) to the **Applications** folder on your computer. Double-click it to open it.

Figure 21 Utility Main Screen



6.1.3 Add a Device

To add a device, click **Add a Device** in the configuration utility main screen.

6.1.4 Change Network Name

The network name or Network Membership Key (NMK) is a password that identifies a powerline network. All powerline devices with the same NMK are in the same powerline network. The default network name of the PLA-401 v3 is **HomePlugAV**. HomePlug compatible devices use the same network name to recognize and communicate with each other over the powerline network. If you change the network name of one device on the network, it will no longer be recognized as part of that network.

If you change the network name, make sure you change the network name for all of the powerline adapters that you want to be part of your powerline network.

To enter the NMK for a powerline adapter, select the device icon in the left panel of the main utility screen and then click **Change Network Name (NMK)** in the main utility screen.

Figure 22 Change Network Name (NMK)

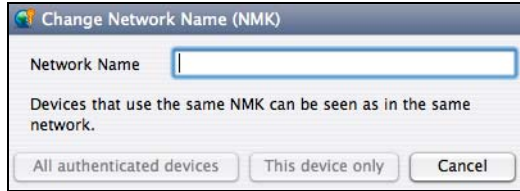


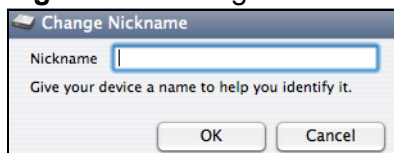
Table 9 Change Network Name (NMK)

LABEL	DESCRIPTION
Network Name	The network name may consist of 8 to 64 letters, numerals and any printable character found on a typical English language keyboard. Spaces are not allowed.
All authenticated devices	Click this button to display a screen showing other powerline devices that are already in the same powerline network as the selected powerline adapter. Click OK to change their NMKs to the Network Name you entered here. Click Cancel to not change them and return to the previous screen.
This device only	Click this button to just update the NMK on the selected powerline adapter.
Cancel	Click this button to close this window without saving any changes.

6.1.5 Change Nickname

You can give each device in your powerline network a 'friendly name' in order to easily distinguish them in your powerline network. The name may consist of up to 64 letters, numerals and any printable character found on a typical English language keyboard. Type a nickname, for example, 'bedroom', and then click **OK**.

Figure 23 Change Nickname)



6.1.6 QoS Settings

You can configure the powerline adapters on your network to give priority to data they transmit.

The following table shows some example priority settings based on application type.

Table 10 Priority Settings

PRIORITY LEVEL	APPLICATION
Highest	Voice Application
High	Video and Audio Applications
Mid	Data Applications
Low	Data Applications

Figure 24 QoS Settings

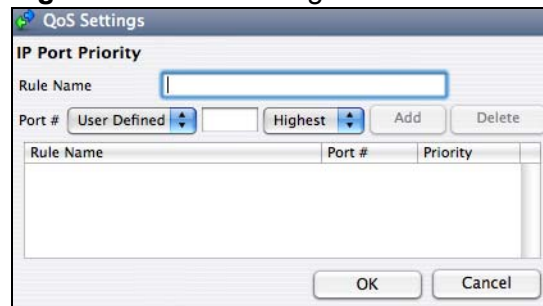


Table 11 QoS Settings

LABEL	DESCRIPTION
IP Port Priority	You can configure up to eight rules defining priority for traffic transmitted from the selected powerline device.
Rule Name	Type a rule name. The name may consist of up to 31 letters, numerals and any printable character found on a typical English language keyboard. Spaces are not allowed.
Port #	<p>Select the type of traffic to which this rule applies. You may select one of the following:</p> <ul style="list-style-type: none"> ● FTP ● HTTP ● E-Mail ● Telnet ● User-Defined <p>If you select User-Defined then enter the port number that defines that traffic type, such as 1823 for MSN traffic. See the common services appendix for port numbers of other traffic types.</p> <p>After you select the traffic type, select the priority level (Highest, High, Mid, Low) assigned to this traffic.</p> <p>Click Add to save the rule to the list in this screen.</p> <p>If you want to delete an existing rule, select it in the text box and then click Delete.</p>
Rule Name	This field displays the name of a previously created priority rule.

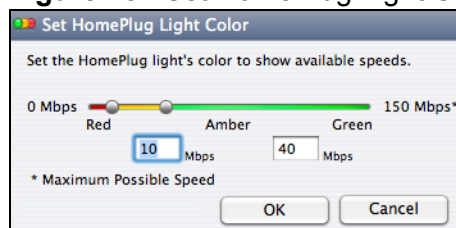
Table 11 QoS Settings (continued)

LABEL	DESCRIPTION
Port #	This field displays the port number for the type of traffic to which this rule applies.
Priority	This field displays the priority level that this traffic receives.
OK	Click this button to save the settings to the device.
Cancel	Click this button to close this window without saving any changes.

6.1.7 Set HomePlug Light Color

Use this screen to define which color the HomePlug light shines at various speeds. For example, configure the light to shine red when the speed is slow enough to warrant your attention, amber for 'near slow' speeds and green for acceptable powerline speeds for your network. The **Maximum Possible Speed** is the best speed that can be attained on your electrical circuit. It varies depending on the electrical wiring, insulation, distance between devices, and electromagnetic interference from adjacent wiring or other electrical devices on your network.

In the default screen shown in [Figure 25 on page 51](#), the maximum possible speed is 150 Mbps. If the speed falls below 10 Mbps, the light will shine red. It will shine amber for speeds between 10 and 40 Mbps and green for speeds above 40 Mbps.

Figure 25 Set HomePlug Light Color

Use the slider to define the light behaviour or type a range in the text boxes for when the light should shine amber. For example, if the maximum possible speed in your network is 100 Mbps and you feel that speeds below 15 Mbps are abnormally slow, and speeds above 50 Mbps are good, then enter '15' in the first text box and '50' in the second. The maximum possible speed, 100 Mbps in our example, is detected automatically by the device; you do not enter it.

If the HomePlug light displays red, indicating that the powerline speed is abnormally slow, try unplugging electrical devices such as lamps, phone chargers, hair dryers, drills and vacuum cleaners from the electrical circuit where your powerline adapters are connected.

6.1.8 Link Information

Use the **Link Info** screen to find out more information on the connection between two powerline adapters on your powerline network. The link information screen shows the MAC addresses of connected powerline adapters and statistics on the links.

Figure 26 Link Information

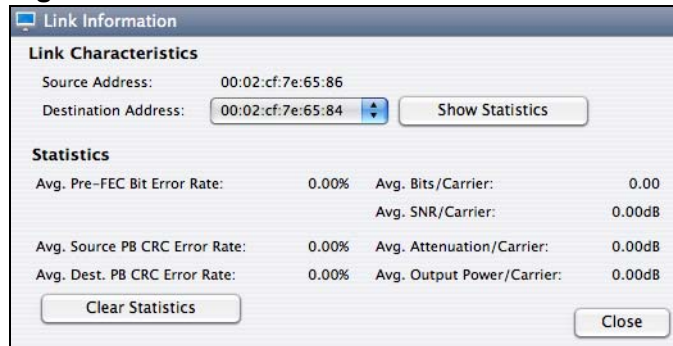


Table 12 Link Information

LABEL	DESCRIPTION
Link Characteristics	
Source Address	This is the MAC address of the local powerline adapter. The local powerline adapter is the one connected directly to your computer. A MAC address is a number that uniquely identifies a device in a network.
Destination Address	This is the MAC address of a remote powerline adapter. A remote powerline adapter is in the same powerline network as the local powerline adapter but is not connected directly to your computer.
Show Statistics	Click this button to show detailed link information between the local and remote power adapters..
Statistics	
Avg. Pre-FEC Bit Error Rate	In powerline networks data is sent in physical blocks (PB). This field shows the average percentage of errors in the physical blocks received by the destination device from your source device before the errors are corrected using FEC (Forward Error Correction). Forward Error Correction (FEC) is a system where the sender adds redundant data to its transmissions. It allows the receiver to correct errors without the need of asking the sender to resend the data. A high error rate may not necessarily result in a poor connection as PBs with errors are discarded and the powerline device adjusts the signal to a frequency level where fewer errors occur.

Table 12 Link Information (continued)

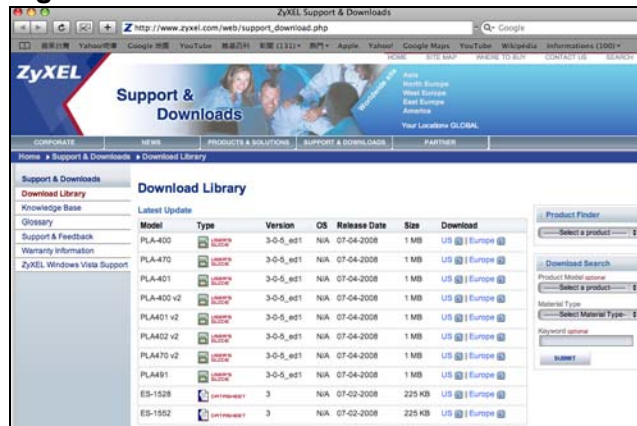
LABEL	DESCRIPTION
Avg. Source PB CRC Error Rate	<p>This field displays the average CRC (Cyclic Redundancy Check) error rate of transmission from the source device (as shown in the screen) received by destination powerline device.</p> <p>A Cyclic Redundancy Check (CRC) is used as a checksum to detect alteration of data during transmission. The CRC error check is performed after Forward Error Correction. If the error rate after FEC error correction is still high, then this indicates a lot of noise at all frequencies on this section of your powerline. Data transmission rates are reduced if there is a lot of noise on the line.</p>
Avg. Destination PB CRC Error Rate	<p>A Cyclic Redundancy Check (CRC) is used as a checksum to detect alteration of data during transmission. This field displays the average CRC (Cyclic Redundancy Check) error rate of transmission from the destination powerline device to the source device (as shown in the screen).</p> <p>The CRC error check is performed after Forward Error Correction. If the error rate after FEC error correction is still high, then this indicates a lot of noise at all frequencies on this section of your powerline. Data transmission rates are reduced if there is a lot of noise on the line.</p>
Avg. Bits/Carrier	<p>This field displays the average number of bits transferred over the connection measured in Mbps. This represents the physical rate of data transmission (the PHY rate) which includes not only the files sent on your powerline, but also line overhead required to manage your network, such as error correction bits.</p> <p>The PHY rate is the clearest indicator of the quality of your line.</p> <ul style="list-style-type: none"> • If the PHY rate is close to the HomePlug AV maximum data transfer rate, then the quality of this section of the line is very high, with very little attenuation. • If the PHY rate varies between the maximum level and a lower level (such as 60 Mbps), there is noise on this section of your powerline. Attenuation is not a factor. • If the PHY rate is steady at a lower level (such as 80 Mbps), this is caused by attenuation and not noise on this section of your powerline.
Avg. SNR/Carrier	<p>This field displays the average Signal to Noise Ratio (SNR) measured in dB. Use this to check the amount of noise on this part of your powerline network. The higher the number the better the connection quality.</p> <p>Noise on your powerline is usually caused by household appliances running on your powerline. The motor of a refrigerator can create electrical interference. A cell/mobile phone recharger which rapidly alternates between on and off can also generate noise. Poor cable quality and installation can also cause noise. To identify causes of noise on your network, disconnect an appliance connected on this part of your powerline network and observe whether this reduces the Signal-to-Noise ratio.</p>

Table 12 Link Information (continued)

LABEL	DESCRIPTION
Avg. Attenuation/ Carrier	<p>This field displays the average attenuation measured in dB. Attenuation is the reduction in strength of a signal as it travels over a transmission line. Use this field to check the reduction in the strength of the signal between two devices.</p> <p>Attenuation may vary considerably across a powerline network as line conditions also vary. A typical level of attenuation may be 40 dB, but may reach over 70 dB, depending on line quality and distance.</p> <p>A main cause of attenuation is the power requirements of appliances on your electrical circuit. Powerline traffic near an appliance such as a refrigerator may be affected by attenuation more than on other sections of your powerline.</p>
Avg. Output Power/ Carrier	This field shows the average power produced by the source device. Power levels should be constant and limited by the output power standard of your country. Unusually high output power levels may damage your device.
Clear Statistics	Click this button to reset all counters in this screen to zero.
Close	Click this button to close this window.

6.1.9 Download Firmware

Use this screen to go to the ZyXEL download library from where you can download firmware to your computer.

Figure 27 Download Firmware

6.2 Firmware Detection Tool

Use the **Firmware Detection Tool** to detect the firmware version of the powerline devices on your network. All powerline devices of the same type should

use the same firmware version. Use the **Firmware Upgrade Tool** to upload new firmware.

You cannot run the **Firmware Detection Tool**, the **Firmware Upgrade Tool** or the **Configuration Utility** at the same time, as only one of these applications can access the PLA-401 v3 connected to your computer at any time.

Figure 28 Firmware Detection Tool

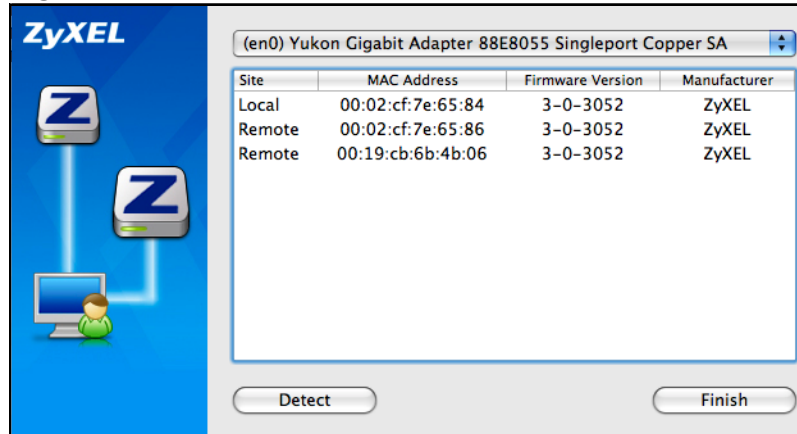


Table 13 Firmware Detection Tool

LABEL	DESCRIPTION
Site	This field shows Local , if it is identifying the powerline adapter directly connected to the computer running the configuration utility and Remote , if it is a powerline adapter in your powerline network but not directly connected to the computer running the configuration utility.
MAC Address	This shows the MAC address of the powerline adapter. You can find the MAC address of your PLA-401 v3 displayed on a sticker on the bottom of your device.
Firmware Version	This field displays the version number of the powerline device. In the example firmware version given in the screen, 3-0-3052 , the numbers 305 represent firmware version 3.0.5.
Manufacturer	This field displays the manufacturer of the powerline device. You can upgrade your device if this field displays ZyXEL . If Other displays then you cannot use the Firmware Upgrade Tool .
Detect	Click this button to display the firmware versions of local and remote devices in the same powerline network.
Finish	Click this button to close this screen.

6.3 Firmware Upgrade Tool

Use the firmware upgrade tool to upgrade firmware to the powerline device directly connected to your computer.

To upgrade to the latest firmware, use the firmware upgrade tool on the CD included with your PLA-401 v3. Make sure you also use the latest PLA-4xx Series Configuration Utility; older utilities may not be compatible with PLA-401 v3s using the latest firmware.

6.3.1 Notes on Upgrading Firmware

- If the firmware version of devices in your powerline network is greater than 3.0.5, then you may only need to upgrade the utility; otherwise you must upgrade both the utility and the firmware!
- Be sure to upload the correct model firmware as uploading the wrong model firmware may damage your device.
- The firmware is included in the upgrade tool. You do not need to download the firmware separately.
- After you upgrade firmware, all settings that you configured in the utility revert to their factory defaults. Before upgrading, write down your current settings. After you upgrade the firmware, you need to reconfigure your device using the utility.
- Your device automatically reboots after you upload the firmware.
- You cannot downgrade firmware to an older version firmware.

6.3.2 Procedure to Upgrade Firmware

- 1 Connect the powerline device to be upgraded to your computer.
- 2 Close the **Configuration Utility** and **Firmware Detection Tool** if either of them are open.

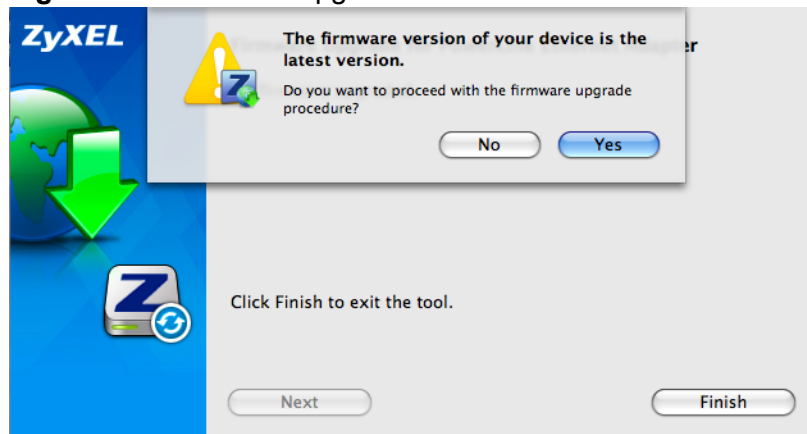
- 3 Open the **Firmware Upgrade Tool** application. Click **Next** to begin the firmware upgrade process.

Figure 29 Firmware Upgrade Tool: Start



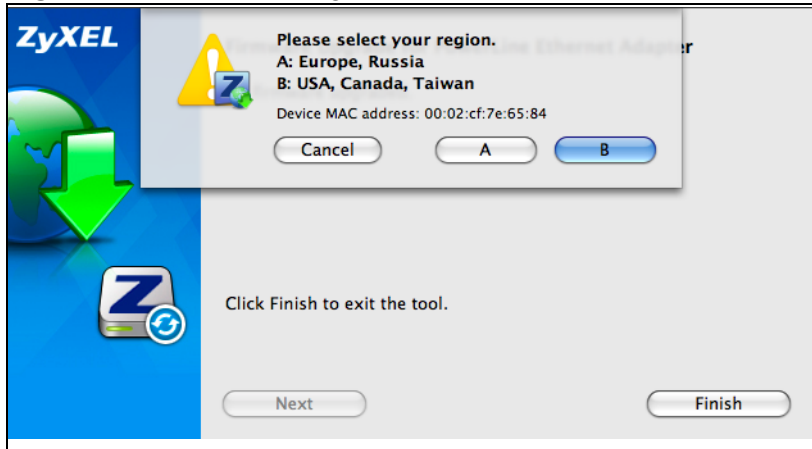
- 4 If you already have the latest version firmware, you'll see a warning screen. Click **No** unless you want to re-upload the firmware.

Figure 30 Firmware Upgrade Tool: Start



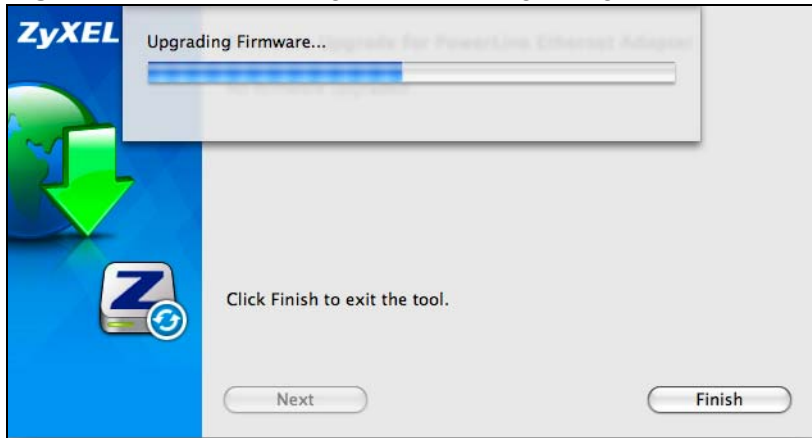
- 5 Select the region where your powerline network is located in the following screen. Make sure you upload the correct firmware for your region as different regions have different firmware characteristics.

Figure 31 Firmware Upgrade Tool: Start



- 6 The firmware upgrade may take several minutes. Do not click anything or reboot the device while firmware upgrade is in progress.

Figure 32 Firmware Upgrade Tool: Upgrading



- 7 If your firmware is successfully upgraded, a successful screen appears. Click **OK**, then **Finish** to close the application. Your device automatically restarts.

Figure 33 Firmware Upgrade Tool: Finish



- 8 To check if your firmware is successfully upgraded, run the **Firmware Detection Utility** again and check your firmware version.
- 9 Repeat this upgrade process for each powerline device you need to upgrade.

Powerline Network Setup Tutorial

7.0.1 Overview

Use this tutorial to expand your existing powerline network.

After setting up your first home powerline network (instructions for that are in the Quick Start Guide for your ZyXEL powerline adapter) you may want to extend the network or create a new one by adding additional powerline adapters. This tutorial shows you the following.

- How to start up your new powerline adapter. You need to do this before you can begin the next sections.
- How to make your existing powerline network bigger by adding new powerline adapters.
- How to make a new network separate from your existing network with new powerline adapters.
- How to make a new, separate powerline network with the powerline adapters you have.

The tutorial uses the **PLA-4xx Series Configuration Utility** to set up your powerline adapter.

If you haven't already installed the utility, see [Chapter 2 on page 21](#) for instructions. If you do not have the CD with the utility, the utility software is also available for download at www.zyxel.com. Navigate to the powerline products section of the ZyXEL website to find this software. Follow the instructions provided by the software to install it on your computer.

See the product specifications in the User's Guide for a list of hardware and software compatible with the utility.

Note: The PLA-401 v3 in this tutorial is an example only. Your powerline adapter may be different.

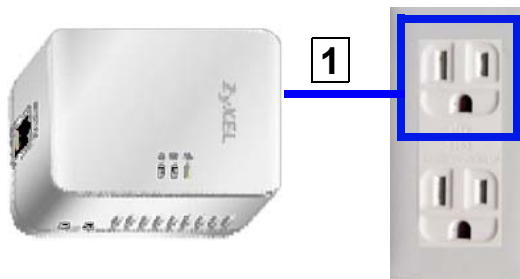
7.0.2 Important Terms

Network Name	The network name allows a powerline adapter to connect with other powerline adapters that have the same network name. It provides security for your powerline network. The network name uses English letters or numbers, from 8 to 64 characters long, with no spaces allowed.
DAK Password	DAK = Device Access Key. The DAK Password lets you access the powerline adapter. You can find the DAK Password on a label on your powerline device.

7.0.3 Accessing Your Powerline Adapter

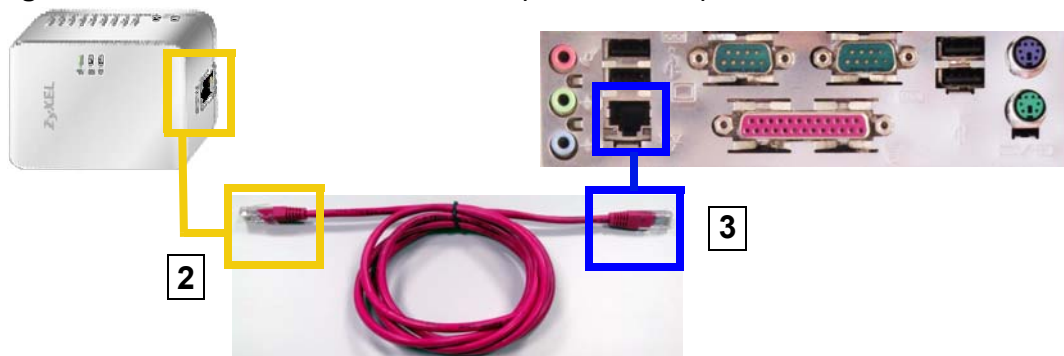
- 1 Plug the powerline adapter you want to add to your network into a power socket and, if needed, switch the power socket on.

Figure 34 Plug Your Powerline Adapter into a Power Socket



- 2 Connect the powerline adapter to your computer.
- 3 Use a LAN or Ethernet cable (shown below) to connect the LAN or Ethernet port on your adapter to the same kind of port on your computer.

Figure 35 Connect Your Powerline Adapter to a Computer



- 4 Open the **PLA-4xx Series Configuration Utility** on your computer. Go to **Start > (All) Programs > ZyXEL PLA-4xx Series Configuration > PLA-4xx Series Configuration Utility**, or click on the icon on your desktop shown below.

Figure 36 Click on the PLA-4xx Series Configuration Utility Icon



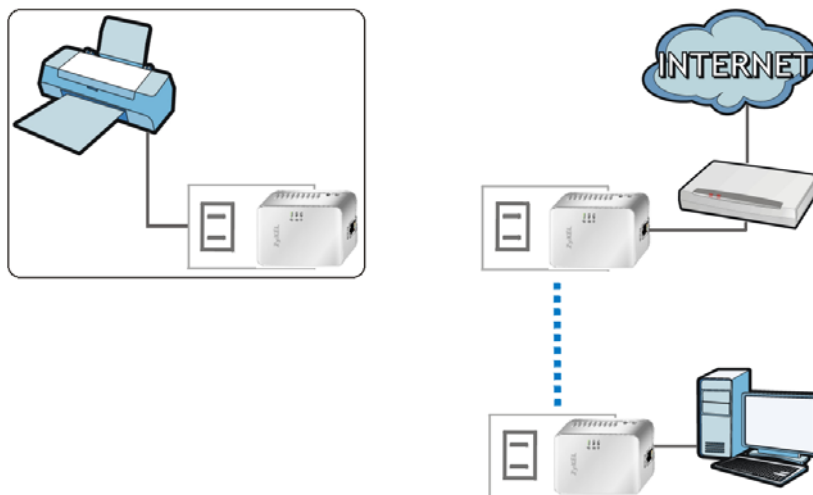
- 5 You are now ready to extend your powerline network or set up a second network.
 - See [Section 7.0.4 on page 63](#) to add a new powerline adapter to your network.
 - See [Section 7.0.5 on page 65](#) to set up a second network with your new adapters.
 - See [Section 7.0.6 on page 67](#) to set up a second network with your existing adapters.

7.0.4 Adding a Powerline Adapter

This section shows you how to add a new powerline adapter to expand your existing network.

The figure below shows the family computer with Internet access on a powerline network. Expand the network by adding a new powerline adapter connected to a printer.

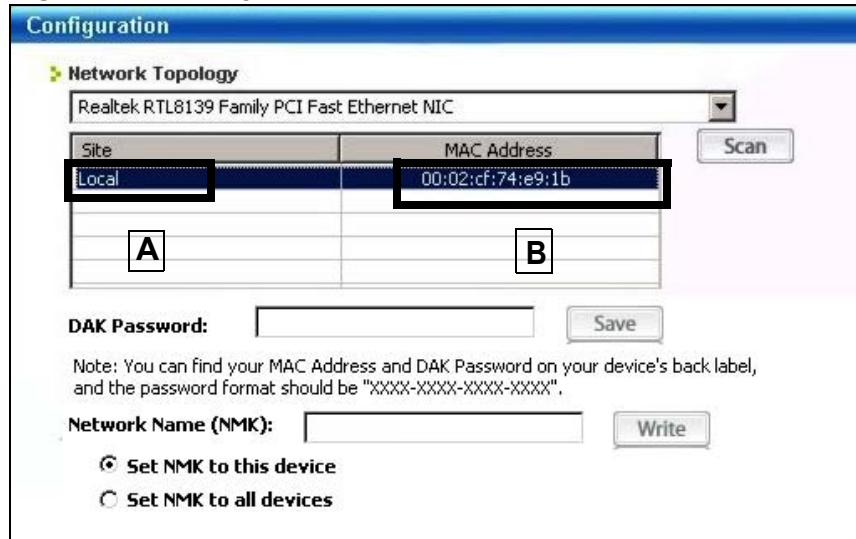
Figure 37 Add a Printer to Your Powerline Network



Note: You do not need to know the network name of the new adapter to add it to your network.

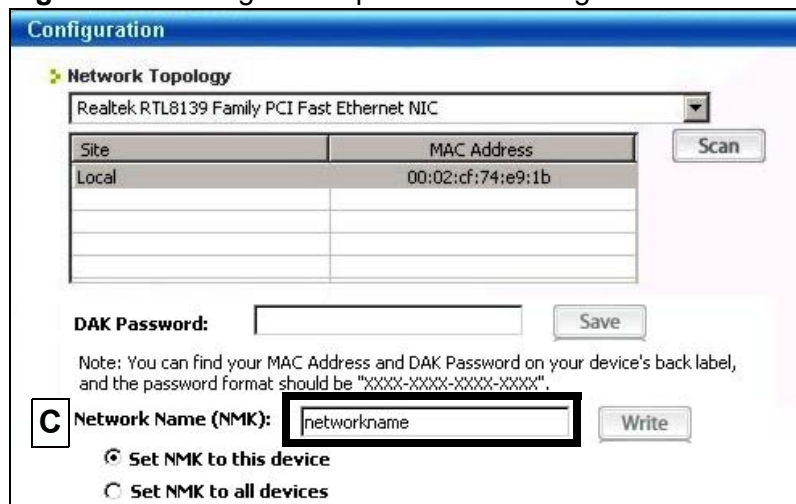
- 1 Connect your computer to the powerline adapter you want to add to your network and open the **PLA-4xx Series Configuration Utility** (see [Section 7.0.3 on page 62](#)).
- 2 The utility should open to the configuration tab. On this screen in the **Site** column your new powerline adapter should appear as **Local (A)**. Check the **Local** adapter's MAC address (**B**). It should match the MAC address listed on the label on the back of your powerline adapter.

Figure 38 Adding a New Adapter



- 3 Select your adapter by selecting **Local** and type the network name for your existing network in the **Network Name** field (**C**).

Figure 39 Adding an Adapter to an Existing Network



- 4 Click **Save** and click **OK** on the pop-up.

Figure 40 Network Name Pop-up



- 5 Your new adapter will now have the same **Network Name** as your existing network and so has now joined your existing network.
- 6 Connect the adapter to the device you want to add to the network, for example, your Internet refrigerator in the kitchen.
- 7 Plug the adapter's power cord into a power outlet and, if required, switch the power outlet on.
- 8 Repeat this procedure for all additional powerline adapters that you want to add to your existing or new powerline network.

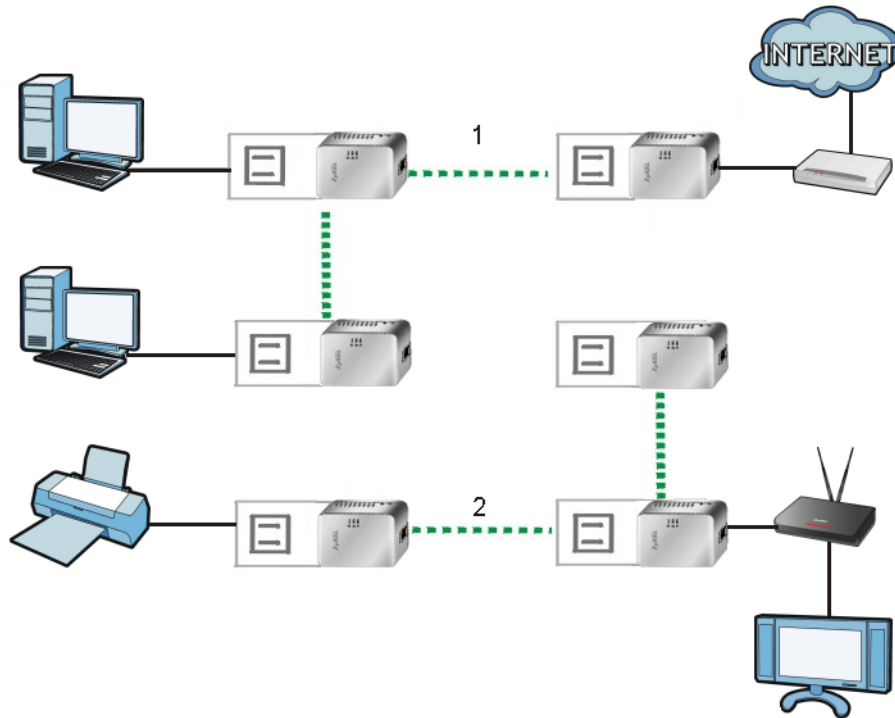
7.0.5 Setting Up a New Network with a New Adapter

This section shows you how to use your new powerline adapters to set up a new powerline network separate to your existing network.

The figure below shows two powerline networks in a house. The first network (**1**) shows the home computer connected to a printer and access to the Internet. The second network (**2**) has no Internet access but with a media adapter such as the

ZyXEL DMA-1100P you can use your TV to watch movies and play games which are stored on a computer.

Figure 41 Add New Adapters to Make a Second Network



- 1 Connect your new powerline adapter and open the configuration utility as shown in [Section 7.0.5 on page 65](#). The screen shown below appears.

- 2 Type a **Network Name** that is different from the **Network Name** for your existing network. Make sure you use the same new **Network Name** for all new adapters you want to add to your new network.

Figure 42 Making a New Network with the New Adapter

Configuration

Network Topology

Realtek RTL8139 Family PCI Fast Ethernet NIC

Site	MAC Address
Local	00:02:cf:74:e9:1b

DAK Password: Save

Note: You can find your MAC Address and DAK Password on your device's back label, and the password format should be "XXXX-XXXX-XXXX-XXXX".

Network Name (NMK): Write

Set NMK to this device
 Set NMK to all devices

- 3 After you have set up a new network, you are ready to connect each powerline adapter on your new network to devices, for example, a computer or a games console.

7.0.6 Splitting a Network into Two Networks

This section shows you how to split your existing network into two networks. This is useful if you want to set up a second powerline network in your home, for example, in your study connecting a laptop and printer. See [Figure 41 on page 66](#) for an example.

To set up your existing powerline network you had to set each powerline adapter with the same network name. To move some of these adapters to a new network, you need to give them a new network name.

- 1 Connect a powerline adapter to your computer and open the **PLA-4xx Series Configuration Utility** (see [Section 7.0.3 on page 62](#)).

- 2 The utility should open to the configuration tab as shown below. A list of powerline adapters on your network displays. These adapters all have the same network name as the adapter you are connected to. The adapter you are connected to will appear as **Local** in this table. All others are listed as **Remote**.

Figure 43 Local/Remote Adapters on a Powerline Network

Configuration

Network Topology

Realtek RTL8139 Family PCI Fast Ethernet NIC

Site	MAC Address
Local	00:02:cf:74:e9:1b
Remote	00:02:cf:74:e9:18
Remote	00:02:cf:74:e9:33

DAK Password: Save

Note: You can find your MAC Address and DAK Password on your device's back label, and the password format should be "XXXX-XXXX-XXXX-XXXX".

Network Name (NMK): Write

Set NMK to this device
 Set NMK to all devices

- 3 To set up a new powerline network, type the **DAK Password** and change the **Network Name** on all powerline adapters you wish to add to your network.
- Look for the **DAK Password** on a label on your powerline adapter. The **DAK Password** lets you access the adapter.
 - Select the **Remote** adapter you want to add (**A**) and type the **DAK Password** in the **DAK Password** field (**B**).
 - Then type the new network name in the **Network Name** field.

Figure 44 Adding an Adapter to Your New Network

Configuration

Network Topology

Realtek RTL8139 Family PCI Fast Ethernet NIC

Site	MAC Address
Remote	00:02:cf:74:e9:33
Remote	00:02:cf:74:e9:18
Local	00:02:cf:74:e9:1b

DAK Password: Save

Note: You can find your MAC Address and DAK Password on your device's back label, and the password format should be "XXXX-XXXX-XXXX-XXXX".

Network Name (NMK): Write

Set NMK to this device
 Set NMK to all devices

4 Click **Save**.

- If you do not type the **DAK password** or type it incorrectly either of the following pop-ups appear. Click **OK** and type the **DAK Password** correctly in the **DAK Password** field.

Figure 45 Incorrect DAK or No DAK



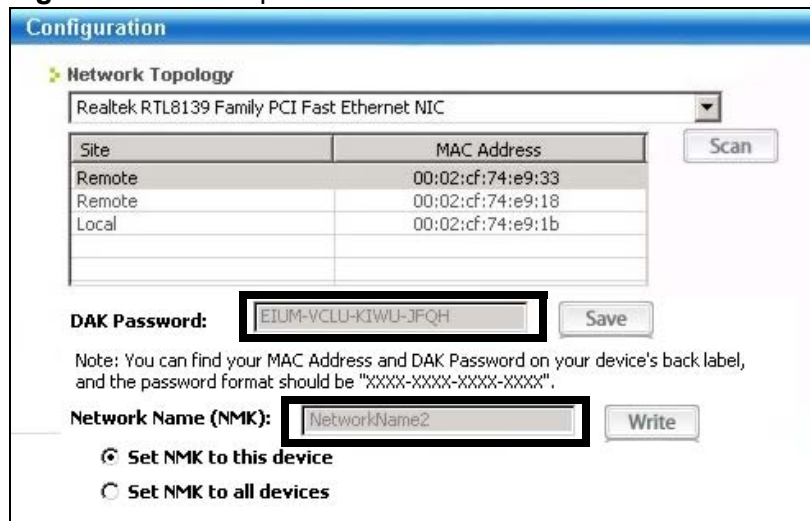
- If you have correctly entered the **DAK Password**, click **OK** on the pop-up.

Figure 46 Correct DAK



- 5 The settings for the adapter will now grey out and the adapter will disappear from the table after a few minutes.

Figure 47 An Adapter on Your New Network



- 6 Go back to step 3 in this section to set the same, new **Network Name** for all remote adapters you want to add to your new network.

- 7 Check you have added the adapters correctly by changing the network name for the local adapter. All adapters with the new **Network Name** now appear in the list of adapters on your network. These adapters are now part of your new network.

Figure 48 Adapters on a New Powerline Network

Configuration

Network Topology

Realtek RTL8139 Family PCI Fast Ethernet NIC

Site	MAC Address
Remote	00:02:cf:74:e9:1b
Remote	00:02:cf:74:e9:1a
Local	00:02:cf:74:e9:33

DAK Password: Save

Note: You can find your MAC Address and DAK Password on your device's back label, and the password format should be "XXXX-XXXX-XXXX-XXXX".

Network Name (NMK): Write

Set NMK to this device
 Set NMK to all devices

- If you want to access any of your new powerline networks using the **PLA-4xx Series Configuration Utility**, change the **Network Name** on your local adapter to the network name for the network you want to access. The adapters on that network will then display in the adapter table, allowing you to select and configure each one.

7.1 Troubleshooting

The HomePlug (🏠) LED (light) should light up on your adapter when it successfully connects to other adapters on your network. If it does not, try the following measures.

- Make sure the adapter is plugged in to a power socket and the power socket is turned on.
- Check you have entered the correct network name for your network.
- Check your powerline adapter is connected to the same electrical circuit as other powerline adapters on your network.

LEDs and Troubleshooting

This chapter describes the behavior of the LEDs (lights) and offers some suggestions to solve problems you might encounter.

8.1 LEDs

The following sections describes the lights on the PLA-401 v3.




The following figure is the front panel of the PLA-401 v3. Use the lights to determine if the PLA-401 v3 is behaving normally or if there are some problems on your powerline network.

Figure 49 PLA-401 v3 Lights



The following table describes the behavior of the lights on the PLA-401 v3.

Table 14 PLA-401 v3 Lights

LIGHTS	ICON	COLOR	STATU S	DESCRIPTION
POWER		Green	On	The PLA-401 v3 is on and receiving power. It also indicates a successful connection using the ENCRYPT button.
			Blinking	The PLA-401 v3 is starting up. It also indicates the PLA-401 v3 is trying to connect with another device using the ENCRYPT function. Blinking at the same time as the HomePlug light indicates an unsuccessful connection if you have used the ENCRYPT button. The Power LED blinks when it is in Low Power mode. Refer to Section 2.3 on page 24 for details on this feature.
		Off	The PLA-401 v3 is not receiving power.	
HomePlug		Green	On	The PLA-401 v3 detects another powerline adapter. The data transfer rate is greater than 40 Mbps.
		Amber		The PLA-401 v3 detects another powerline adapter. The data transfer rate is between 10~40 Mbps.
		Red		The PLA-401 v3 detects another powerline adapter. The data transfer rate is between 0~10 Mbps.
		Green/ Amber/ Red	Blinking	The PLA-401 v3 is communicating with another powerline adapter. Data is being transmitted and/or received. Blinking at the same time as the POWER light indicates an unsuccessful connection if you have used the ENCRYPT button.
			Off	The HomePlug port does not detect another powerline adapter.
ETHERNET		Green	On	The ETHERNET port is on and ready and the PLA-401 v3 detects a device connected to it.
			Blinking	The PLA-401 v3 is communicating with a networking device connected to it.
			Off	The PLA-401 v3 does not detect any devices connected to its ETHERNET port.

8.2 Power and Light Problems

The PLA-401 v3 does not turn on. None of the lights turn on.


- 1 Make sure you are using the power cord included with the PLA-401 v3.
- 2 Make sure the power cord is connected to the PLA-401 v3 and plugged in to an appropriate power source. Make sure the power source is turned on.
- 3 Disconnect and re-connect the power cord to the PLA-401 v3.
- 4 Remove the powerline adapter from the outlet. Then connect an electrical device that you know works into the same power outlet. This checks the status of the power outlet.
- 5 If the problem continues, contact the vendor.

The ETHERNET light does not turn on.

- 1 Check the hardware connections. See the Quick Start Guide.
- 2 Inspect your cables for damage. Contact the vendor to replace any damaged cables.
- 3 Check the Ethernet adapter on your computer and make sure it's enabled and working properly.
- 4 If the PLA-401 v3 is connected to an Ethernet switch or router, make sure the device is working correctly, and that the LAN network is working and configured correctly as well.

The HomePlug light does not turn on.

- 1 Check all PLA-401 v3s on your network have the latest firmware installed. PLA-401 v3s with the latest firmware cannot communicate with PLA-401 v3s using earlier versions of the firmware. Go to [Section 5.4 on page 38](#) for instructions on installing the latest firmware.

- 2 Use the **PLA-4xx Series Configuration Utility** to detect all other HomePlug devices on your powerline network. Make sure that the network name (sometimes called the network password) is the same on all of your powerline adapters. See [Section 5.3 on page 37](#) for instructions on checking the network name.
- 3 Check the DAK password and MAC address for all powerline adapters are typed correctly in the utility. See [Section 5.3 on page 37](#) for instructions on checking the DAK and MAC address.
- 4 Make sure that all your powerline adapters are HomePlug AV compliant. Check the package it came in or ask your vendor. This PLA-401 v3 can not detect earlier versions of HomePlug powerline adapters such as HomePlug 1.0 or 1.0.1. (Although they can coexist on the same electrical wiring without interfering with each other.)
- 5 Make sure that the powerline adapters on your network are all on the same electrical wiring. Connect another powerline adapter into an outlet close to your PLA-401 v3's power outlet. They are probably now on the same electrical wiring. Check the HomePlug  light. If it now lights up your powerline adapter was probably previously on separate electrical wiring. Ask an electrician for more information on the electrical wiring in your building.
- 6 If your powerline network is using coaxial cable, check all powerline adapters are on the same coaxial cable.
- 7 If your powerline network is using electrical wiring (not coaxial cable), check you do not have a power meter between powerline adapters. Powerline signals cannot pass this.

The POWER and HomePlug light blink at the same time.

- You have pressed the ENCRYPT button for more than three seconds. Try setting up a connection again, this time pressing the ENCRYPT buttons on both devices for less than three seconds.

8.3 Configuration Utility Problems

The PLA-4xx Series Configuration Utility displays an error during installation.

- Make sure your computer is using Windows XP or Windows Vista (32-bit) operating system. At the time of writing, this is the only compatible operating system for the configuration utility.

The PLA-4xx Series Configuration Utility does not display all or any of my devices.

- Inspect the LEDs on your PLA-401 v3 and make sure that the ETHERNET and HomePlug LEDs are on or blinking. See [Section 8.1 on page 71](#) for troubleshooting LED related problems.
- Check all ZyxEL HomePlug AV devices on your network have the latest firmware installed. The latest utility cannot communicate with PLA-401 v3s using earlier versions of the firmware. Go to [Section 5.4 on page 38](#) for instructions on installing the latest firmware.
- Check you are using the latest version utility. Earlier version utilities cannot communicate with PLA-401 v3s using the latest firmware. If you do not have the latest utility, download it from the ZyXEL website.
- If the device is not a ZyXEL device, then the DAK and Network Name will be greyed out.
- If you are running another tool such as the **Firmware Detection Tool** or **Firmware Upgrade Tool**, the Utility will not detect your local device.

8.4 Powerline Problems

The signal on my powerline network is weak.

- 1 Your powerline adapters may be connected to electrical surge protectors. Connect them to standard power outlets.
- 2 Your powerline adapters may be located close to large appliances such as refrigerators or air-conditioners that cause interference with the powerline signal. Move the adapters further away from such appliances to reduce interference.
- 3 Your powerline adapters may be placed close to electrical devices such as electrical insect-killers which produce radio waves. These may interfere with the powerline signals. Move the adapters further away from such electrical devices.
- 4 Your wiring may be old and/or low quality or with a long wiring path.

8.5 ENCRYPT Button Problems

This section applies only to PLA-401 v3s with the **ENCRYPT** button.

The HomePlug light is already on, but I haven't pressed the **ENCRYPT** button yet.

Your device has already connected to another powerline device. Press the **ENCRYPT** button for more than 10 seconds to release the connection.

The **POWER** light does not blink when I press the **ENCRYPT** button.

- Check the device is on.
- Press the **ENCRYPT** button again, making certain you have pressed the button for more than one second and less than three seconds.
- The **POWER** light on some powerline devices do not blink as part of the **ENCRYPT** process. Check your powerline device is a PLA-401 v3.
- For PLA-401 v3, you cannot use the **ENCRYPT** button when it is in Low Power mode. Connect the PLA-401 v3 to a computer/router then try again.

The **POWER** light blinks two times quickly then pauses, before repeating.

The **ENCRYPT** process has failed. Press the **ENCRYPT** button on both devices for more than 10 seconds, then try to reconnect.


The **POWER** lights on both devices blink when I press the **ENCRYPT** buttons, but the HomePlug light does not turn on.

- Ensure you have pressed the **ENCRYPT** button on **both** devices.
- Wait for about a minute while the devices set up a connection.
- If that does not work, try again with both devices connected to a power strip next to each other. If they now connect, then the devices were not on the same electrical circuit before.

The POWER lights on both devices blink, then many lights blink and the HomePlug light blinks red.

Do not worry, the connection process is proceeding normally.

The POWER lights on both devices finished blinking, but only one device's HomePlug light is on.

One device may have connected to a third powerline device. To check device A is connected to device B and not another device, disconnect device B from its power source. Device A's HomePlug () light will turn off if the connection is with Device B. Press the **ENCRYPT** button on **both** devices for more than 10 seconds, then try to reconnect, pressing the **ENCRYPT** button for less than 3 seconds on both devices.

I pressed the ENCRYPT button for more than 10 seconds, but the HomePlug light is still on.

The HomePlug light is on, indicating it is still connected to another powerline device. Try again, pressing the **ENCRYPT** button for more than 10 seconds.

PART III

Appendices and

Index

Product Specifications (81)

Legal Information (85)

Index (89)

Product Specifications

The following tables summarize the PLA-401 v3's hardware and firmware features.

Table 15 Hardware Specifications

Dimensions (W x D x H)	95 mm (L) x 65 (H) mm x 80 (W) mm
Power Input	100 - 240 VAC, 50/60 Hz, 0.12 A
Ethernet Port	Auto-negotiating: 10 Mbps or 100 Mbps in either half-duplex or full-duplex mode. Auto-crossover: Use either crossover or straight-through Ethernet cables.
RESET	Pressing this button in for less than 3 seconds resets the device to factory default settings. Network Name becomes HomePlugAV .
ENCRYPT	Pressing this button in for less than 3 seconds begins the connection setup process. Pressing this button in for more than 10 seconds resets the network name to a random value.
Operation Environment	Temperature: 0° C ~ 45° C Humidity: 20% ~ 90% Noncondensing
Storage Environment	Temperature: -20° C ~ 70° C Humidity: 20% ~ 95% Noncondensing
Cabling Type	1 x LAN UTP Category 5 or Better
Network Interface	1 x 10/100M BASE-T Ethernet port with Auto MDI/MDIX
Distance between the centers of the holes on the device's back.	74 mm
Recommended type of screws for wall-mounting	Not applicable

Table 16 Firmware Specifications

FEATURE	DESCRIPTION
Powerline Functionality	<p>The HomePlug AV standard specifies how network devices communicate using standard electrical wiring.</p> <p>It supports a data transfer rate of up to 200Mbps.</p> <p>Data is encrypted using 128-bit AES (Advanced Encryption Standard).</p> <p>HomePlug AV compatible devices co-exist with HomePlug 1.0 devices but do not detect each other.</p> <p>The range of a HomePlug AV network is 300 meters/984 feet in optimal conditions.</p> <p>HomePlug AV is compatible with all OSs.</p> <p>The maximum number of devices connected (bridged) to single powerline adapter is 64.</p> <p>The maximum number of powerline devices on a single network is 64.</p> <p>The maximum number of powerline networks on a single electrical circuit is 4.</p> <p>HomePlug AV devices using version 3.3.4 firmware cannot communicate with earlier version firmware.</p>
Encryption	128-bit AES Encryption
Frequency Band	1.8 MHz ~ 30 MHz
Certifications	FCC, CE, CUL, UL, HomePlug AV, RoHS
Device Management	<p>Use the PLA-4xx Series Configuration Utility version 3.0.5(AG) to easily configure the PLA-401 v3.</p> <p>Note: The PLA-4xx Series Configuration Utility version 3.0.5(AG) is only compatible with PLA-401 v3s with the latest firmware installed.</p>
Network Name	Change the powerline network name to only allow the powerline adapters you specify to join your network.
Firmware Upgrade	<p>Download new firmware (when available) from the ZyXEL website and use the configuration utility to install it.</p> <p>Note: You do not need the configuration utility to install the latest firmware. Follow the instructions in Section 5.4 on page 38 for installing the latest firmware.</p> <p>Note: Only install firmware for your specific model!</p>
Low Power mode	The powerline adapter goes into Low Power mode when no Ethernet connection is detected.

Table 17 Performance

FEATURE	DESCRIPTION
Throughput over PHYSical Transport Medium (PHY)	Supports up to 200 Mbps in half duplex mode
Throughput over UDP	Supports up to 150 Mbps over in-house power/coaxial lines (LAN port limits to 100 Mbps)
Number of devices in one powerline network	Supports up to 64 devices in 4 network groups

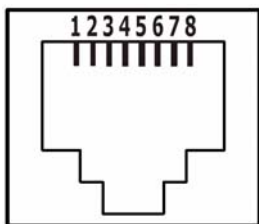
The following list, which is not exhaustive, illustrates the standards supported in the PLA-401 v3.

Table 18 Standards Supported

STANDARD	DESCRIPTION
HomePlug AV	Designed for transmitting audio/video on a home powerline network.
RFC 868	Time Protocol.
RFC 1112	IGMP v1
RFC 1157	SNMPv1: Simple Network Management Protocol version 1
RFC 1901	SNMP v2c Simple Network Management Protocol version 2c
RFC 2236	Internet Group Management Protocol, Version 2.

Cable Pin Assignments

RJ-45 Connector Pin Assignments

Figure 50 RJ-45 Connector Pins**Table 19** RJ-45 Connector Pin Assignments

PIN NO	RJ-45 SIGNAL ASSIGNMENT
1	RxD +
2	RxD -
3	TxD +
4	Not connected
5	Not connected
6	TxD -
7	Not connected
8	Not connected

Legal Information

Copyright

Copyright © 2009 by ZyXEL Communications Corporation.

The contents of this publication may not be reproduced in any part or as a whole, transcribed, stored in a retrieval system, translated into any language, or transmitted in any form or by any means, electronic, mechanical, magnetic, optical, chemical, photocopying, manual, or otherwise, without the prior written permission of ZyXEL Communications Corporation.

Published by ZyXEL Communications Corporation. All rights reserved.

Disclaimers

ZyXEL does not assume any liability arising out of the application or use of any products, or software described herein. Neither does it convey any license under its patent rights nor the patent rights of others. ZyXEL further reserves the right to make changes in any products described herein without notice. This publication is subject to change without notice.

Your use of the PLA-401 v3 is subject to the terms and conditions of any related service providers.

Do not use the PLA-401 v3 for illegal purposes. Illegal downloading or sharing of files can result in severe civil and criminal penalties. You are subject to the restrictions of copyright laws and any other applicable laws, and will bear the consequences of any infringements thereof. ZyXEL bears NO responsibility or liability for your use of the download service feature.

Make sure all data and programs on the PLA-401 v3 are also stored elsewhere. ZyXEL is not responsible for any loss of or damage to any data, programs, or storage media resulting from the use, misuse, or disuse of this or any other ZyXEL product.

Trademarks

ZyNOS (ZyXEL Network Operating System) is a registered trademark of ZyXEL Communications, Inc. Other trademarks mentioned in this publication are used for identification purposes only and may be properties of their respective owners.

Certifications

Federal Communications Commission (FCC) Interference Statement

The device complies with Part 15 of FCC rules. Operation is subject to the following two conditions:

- This device may not cause harmful interference.
- This device must accept any interference received, including interference that may cause undesired operations.

This device has been tested and found to comply with the limits for a Class B digital device pursuant to Part 15 of the FCC Rules. These limits are designed to provide reasonable protection against harmful interference in a residential installation. This device generates, uses, and can radiate radio frequency energy, and if not installed and used in accordance with the instructions, may cause harmful interference to radio communications. However, there is no guarantee that interference will not occur in a particular installation.

If this device does cause harmful interference to radio/television reception, which can be determined by turning the device off and on, the user is encouraged to try to correct the interference by one or more of the following measures:

- 1 Reorient or relocate the receiving antenna.
- 2 Increase the separation between the equipment and the receiver.
- 3 Connect the equipment into an outlet on a circuit different from that to which the receiver is connected.
- 4 Consult the dealer or an experienced radio/TV technician for help.

CE-Konformität

Das Produkt entspricht den grundlegenden Anforderungen der Richtlinie 1999/5/EG (R&TTE) sowie den übrigen einschlägigen Bestimmungen des FTEG und ist zum Betrieb in der EU und Schweiz vorgesehen. Das Produkt ist eine Einrichtung der Klasse A. Diese Einrichtung kann im Wohnbereich Funkstörungen

verursachen; in diesem Fall kann vom Betreiber verlangt werden, angemessene Massnahmen durchzuführen.

Conformité CE

Le produit satisfait aux exigences techniques de la directive 1999/5/CE (R&TTE) et est conçu pour être utilisé au sein de la Communauté européenne et en Suisse. Le produit fait partie de la classe A, ce qui signifie que son exploitation peut entraîner des bruits parasites dans les zones d'habitation; le cas échéant, l'exploitant peut être tenu de prendre des mesures appropriées pour remédier au dérangement.

Conformità CE

Questo prodotto soddisfa le richieste tecniche della direttiva 1999/5/EG (R&TTE) ed è previsto per il funzionamento nella UE e in Svizzera. Il prodotto è dispositivo della classe A. Questo dispositivo può causare nel settore abitativo dei radiodisturbi.

In questo caso può essere richiesto al gestore di prendere opportune misure.

Notices

Changes or modifications not expressly approved by the party responsible for compliance could void the user's authority to operate the equipment.

This Class B digital apparatus complies with Canadian ICES-003.

Cet appareil numérique de la classe B est conforme à la norme NMB-003 du Canada.

Viewing Certifications

- 1 Go to <http://www.zyxel.com>.
- 2 Select your product on the ZyXEL home page to go to that product's page.
- 3 Select the certification you wish to view from this page.

ZyXEL Limited Warranty

ZyXEL warrants to the original end user (purchaser) that this product is free from any defects in materials or workmanship for a period of up to two years from the date of purchase. During the warranty period, and upon proof of purchase, should the product have indications of failure due to faulty workmanship and/or materials, ZyXEL will, at its discretion, repair or replace the defective products or

components without charge for either parts or labor, and to whatever extent it shall deem necessary to restore the product or components to proper operating condition. Any replacement will consist of a new or re-manufactured functionally equivalent product of equal or higher value, and will be solely at the discretion of ZyXEL. This warranty shall not apply if the product has been modified, misused, tampered with, damaged by an act of God, or subjected to abnormal working conditions.

Note

Repair or replacement, as provided under this warranty, is the exclusive remedy of the purchaser. This warranty is in lieu of all other warranties, express or implied, including any implied warranty of merchantability or fitness for a particular use or purpose. ZyXEL shall in no event be held liable for indirect or consequential damages of any kind to the purchaser.

To obtain the services of this warranty, contact your vendor. You may also refer to the warranty policy for the region in which you bought the device at http://www.zyxel.com/web/support_warranty_info.php.

Registration

Register your product online to receive e-mail notices of firmware upgrades and information at www.zyxel.com.

Index

Symbols

.NET Framework [21](#)

A

about screen [44](#)

Advanced Encryption Standard, see AES [15](#)

AES [17](#), [35](#)

AES (Advanced Encryption Standard) [15](#)

applications [15](#)

C

cabling type [81](#)

CE [82](#)

certifications [82](#), [86](#)

notices [87](#)

viewing [87](#)

configuration screen [37](#)

connections overview [16](#)

copyright [85](#)

D

DAK [35](#), [37](#)

DAK (Data Access Password) [17](#)

Data Access Password, see DAK [17](#)

dimensions [81](#)

disclaimer [85](#)

E

electrical and cable wiring [35](#)

electrical circuit boundaries [35](#)

encryption [15](#), [35](#), [82](#)

ETHN LED [71](#)

F

FCC [82](#)

FCC interference statement [86](#)

firmware [38](#)

frequency band [82](#)

H

HomePlug AV standard [15](#)

humidity, operation and storage [81](#)

I

installation

overview [21](#)

procedure [21](#)

requirements [21](#)

InstallShield wizard [23](#)

introduction [15](#)

L

LED [71](#)

ETHN [71](#)

LINK [71](#)

PWR [71](#)

LINK LED [71](#)

local vs. remote adapter [37](#)

M

MAC address [37](#)
management
 multiple networks [18](#)
 overview [35](#)
managing the device
 using the web configurator. See web configurator.
multiple networks [18](#)

N

network example [35](#)
network information [40](#)
network ports [81](#)

P

Parameter Information Block, see PIB [38](#)
passwords [35](#), [37](#), [38](#)
 types of [17](#)
PIB (Parameter Information Block) [38](#)
plug-and-play [35](#)
power specification [81](#)
priority settings [41](#)
 application type [42](#), [50](#)
 priority levels [44](#)
private network [17](#)
problems and solutions [71](#)
product registration [88](#)
PWR LED [71](#)

R

receive rate [40](#)
registration
 product [88](#)
related documentation [3](#)

S

safety warnings [7](#)
security [16](#), [18](#), [35](#)
 passwords [17](#)
starting the utility [36](#), [48](#)
syntax conventions [5](#)

T

temperature, operation and storage [81](#)
trademarks [86](#)
transfer rates [15](#)
transmit rate [40](#)
troubleshooting [71](#)

U

utility
 launching [36](#), [48](#)

W

warranty [87](#)
 note [88](#)
web configurator [16](#)